

## Product datasheet for **TA319764**

### PHOX2B Rabbit Polyclonal Antibody

#### Product data:

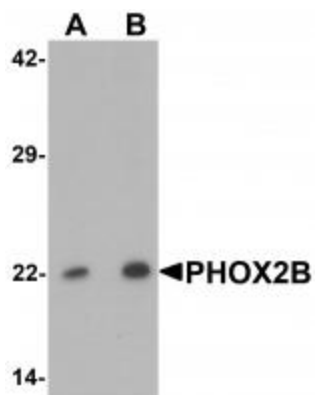
Product Type:	Primary Antibodies
Applications:	WB
Recommended Dilution:	WB: 1 - 2 ug/mL
Reactivity:	Human, Mouse, Rat
Host:	Rabbit
Isotype:	IgG
Clonality:	Polyclonal
Immunogen:	PHOX2B antibody was raised against a 15 amino acid synthetic peptide near the center of human PHOX2B.
Formulation:	PHOX2B Antibody is supplied in PBS containing 0.02% sodium azide.
Concentration:	1ug/ul
Purification:	PHOX2B Antibody is affinity chromatography purified via peptide column.
Conjugation:	Unconjugated
Storage:	Store at -20°C as received.
Stability:	Stable for 12 months from date of receipt.
Gene Name:	paired like homeobox 2b
Database Link:	<a href="#">NP_003915</a> <a href="#">Entrez Gene 18935 Mouse</a> <a href="#">Entrez Gene 364152 Rat</a> <a href="#">Entrez Gene 8929 Human</a> <a href="#">Q99453</a>
Background:	PHOX2B Antibody: PHOX2A and PHOX2B (Paired mesoderm homeobox protein) are closely related, paired-homeodomain transcription factors that function as determinants of the noradrenergic phenotype during embryogenesis. PHOX2 proteins are crucial for the regulation of endogenous hydroxylases in neural crest cells and promote sympathetic neuron generation. Human PHOX2B contains one DNA binding homeobox domain and is required for the differentiation of all central and nonperipheral noradrenergic centers in the brain. In contrast, PHOX2A controls only the differentiation of the main noradrenergic center of the brain. Regulation of PHOX2 may have therapeutic utility in aging or disorders involving degeneration of noradrenergic neurons.



[View online »](#)

Synonyms: NBLST2; NBPhox; PMX2B

**Product images:**



Western blot analysis of PHOX2B in 293 cell lysate with PHOX2B antibody at (A) 1 and (B) 2 ug/mL.