

Product datasheet for **TA319763**

FOXH1 Rabbit Polyclonal Antibody

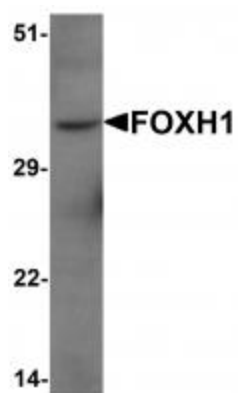
Product data:

Product Type:	Primary Antibodies
Applications:	IF, WB
Recommended Dilution:	WB: 1 - 2 ug/mL, IF: 20 ug/mL
Reactivity:	Human, Mouse, Rat
Host:	Rabbit
Isotype:	IgG
Clonality:	Polyclonal
Immunogen:	Rabbit polyclonal FOXH1 antibody was raised against a 19 amino acid peptide near the amino terminus of human FOXH1.
Formulation:	FOXH1 Antibody is supplied in PBS containing 0.02% sodium azide.
Concentration:	1ug/ul
Purification:	FOXH1 Antibody is affinity chromatography purified via peptide column.
Conjugation:	Unconjugated
Storage:	Store at -20°C as received.
Stability:	Stable for 12 months from date of receipt.
Predicted Protein Size:	40 kDa
Gene Name:	forkhead box H1
Database Link:	NP_003914 Entrez Gene 14106 MouseEntrez Gene 300054 RatEntrez Gene 8928 Human O75593
Background:	FOXH1 Antibody: FOXH1 is a member of the Forkhead-box (FOX) family of transcription factors and is the human homolog of Xenopus forkhead activin signal transducer-1. FOXH1 plays an important role in mediating TGF-beta/activin signals through its interaction with the SMAD2-SMAD4 complex. It is expressed primarily during early development and localizes in the cytoplasm until it forms a complex with the SMAD proteins at which time it translocates to the nucleus to positively or negatively affect gene expression.
Synonyms:	FAST-1; FAST1

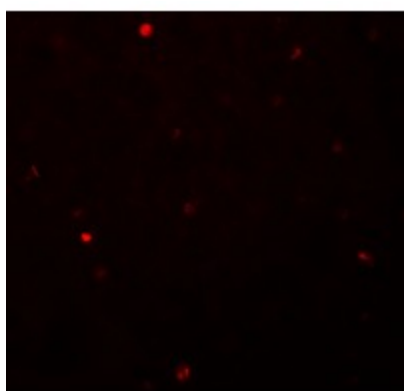


[View online »](#)

Product images:



Western blot analysis of FOXH1 in human liver tissue lysate with FOXH1 antibody at 1 ug/mL.



Immunofluorescence of FOXH1 in human liver tissue with FOXH1 antibody at 20 ug/mL.