

Product datasheet for **TA319762**

Apc6 (CDC16) Rabbit Polyclonal Antibody

Product data:

Product Type:	Primary Antibodies
Applications:	IF, IHC, WB
Recommended Dilution:	WB: 1 - 2 ug/mL, ICC: 5 ug/mL, IF: 20 ug/mL
Reactivity:	Human, Mouse
Host:	Rabbit
Isotype:	IgG
Clonality:	Polyclonal
Immunogen:	APC6 antibody was raised against an 18 amino acid synthetic peptide near the amino terminus of human APC6.
Formulation:	APC6 Antibody is supplied in PBS containing 0.02% sodium azide.
Concentration:	1ug/ul
Purification:	APC6 Antibody is affinity chromatography purified via peptide column.
Conjugation:	Unconjugated
Storage:	Store at -20°C as received.
Stability:	Stable for 12 months from date of receipt.
Gene Name:	cell division cycle 16
Database Link:	NP_003894 Entrez Gene 8881 Human Q13042



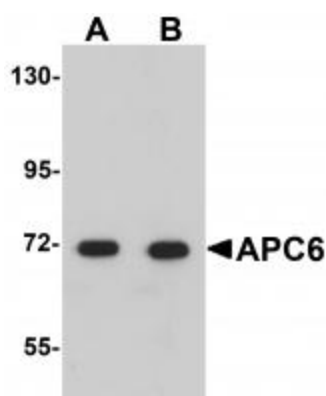
[View online »](#)

Background:

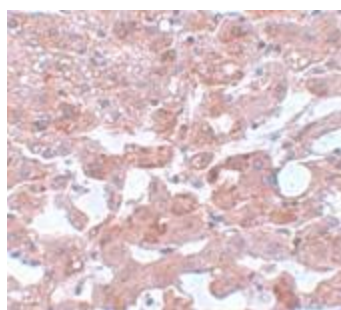
APC6 Antibody: Cell cycle regulated protein ubiquitination and degradation within subcellular domains is thought to be essential for the normal progression of mitosis. APC6 is a highly conserved component of the anaphase promoting complex/cyclosome (APC/C), a cell cycle-regulated E3 ubiquitin ligase that controls progression through mitosis and the G1 phase of the cell cycle. APC/C is responsible for degrading anaphase inhibitors, mitotic cyclins, and spindle-associated proteins ensuring that events of mitosis take place in proper sequence. The individual APC/C components mRNA and protein levels are expressed at approximately the same levels in most tissues and cell lines, suggesting that they perform their functions as part of a complex. While little is known of APC6, it has been shown to interact with and is stabilized by CDC26 through an intermolecular TPR mimic composed of one helix from each protein.

Synonyms:

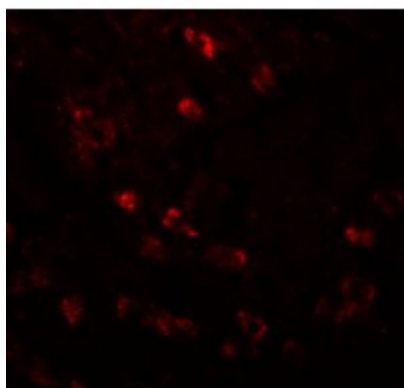
ANAPC6; APC6; CDC16Hs; CUT9

Product images:

Western blot analysis of APC6 in human liver tissue lysate with APC6 antibody at (A) 1 and (B) 2 ug/mL.



Immunohistochemistry of APC6 in human liver tissue with APC6 antibody at 5 ug/mL.



Immunofluorescence of APC6 in human liver tissue with APC6 antibody at 20 ug/mL.