

## Product datasheet for **TA319761**

### TIF1 alpha (TRIM24) Rabbit Polyclonal Antibody

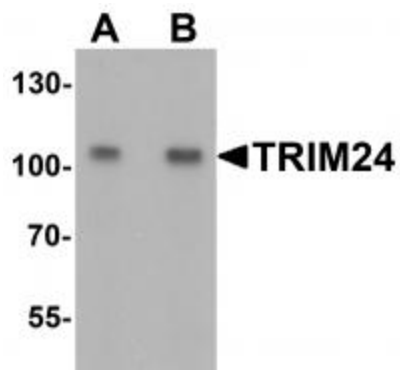
#### Product data:

Product Type:	Primary Antibodies
Applications:	IF, WB
Recommended Dilution:	WB: 1 - 2 ug/mL
Reactivity:	Human, Mouse, Rat
Host:	Rabbit
Isotype:	IgG
Clonality:	Polyclonal
Immunogen:	TRIM24 antibody was raised against a 19 amino acid peptide near the center of human TRIM24.
Formulation:	TRIM24 Antibody is supplied in PBS containing 0.02% sodium azide.
Concentration:	1ug/ul
Purification:	TRIM24 Antibody is affinity chromatography purified via peptide column.
Conjugation:	Unconjugated
Storage:	Store at -20°C as received.
Stability:	Stable for 12 months from date of receipt.
Predicted Protein Size:	112 kDa
Gene Name:	tripartite motif containing 24
Database Link:	<a href="#">NP_056989</a> <a href="#">Entrez Gene 8805 Human</a> <a href="#">Q15164</a>
Background:	TRIM24 Antibody: TRIM24 (TIF1), a member of the tripartite motif (TRIM) family, plays a role in the regulation of cell proliferation and apoptosis. TRIM24 localizes to nuclear bodies and is thought to associate with chromatin and heterochromatin-associated factors. The TRIM motif includes three zinc-binding domains (RING, B-box type 1 and B-box type 2) and a coiled-coil region. TIF1 mediates transcriptional events by interactions with the AF2 region of several nuclear receptors, such as the estrogen, retinoic acid and vitamin D3 receptors. Defects in TRIM24 are a cause of thyroid papillary carcinoma (TPC).
Synonyms:	hTIF1; PTC6; RNF82; TF1A; TIF1; TIF1A; TIF1ALPHA

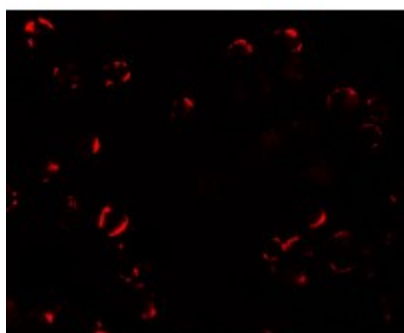


[View online »](#)

## Product images:



Western blot analysis of TRIM24 in EL4 cell lysate with TRIM24 antibody at (A) 0.5 and (B) 1 ug/mL.



Immunofluorescence of TRIM24 in EL4 cells with TRIM24 antibody at 20 ug/mL.