

## Product datasheet for **TA319760**

### DLK (DLK1) Rabbit Polyclonal Antibody

#### Product data:

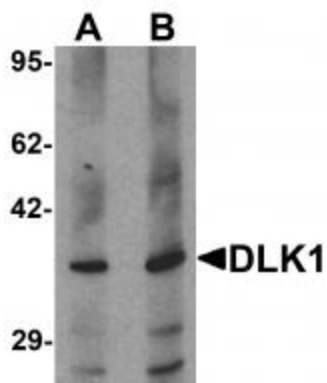
Product Type:	Primary Antibodies
Applications:	IF, WB
Recommended Dilution:	WB: 1 - 2 ug/mL
Reactivity:	Human, Mouse, Rat
Host:	Rabbit
Isotype:	IgG
Clonality:	Polyclonal
Immunogen:	DLK1 antibody was raised against an 18 amino acid synthetic peptide near the carboxy terminus of human DLK1.
Formulation:	DLK1 Antibody is supplied in PBS containing 0.02% sodium azide.
Concentration:	1ug/ul
Purification:	DLK1 Antibody is affinity chromatography purified via peptide column.
Conjugation:	Unconjugated
Storage:	Store at -20°C as received.
Stability:	Stable for 12 months from date of receipt.
Predicted Protein Size:	42 kDa
Gene Name:	delta like non-canonical Notch ligand 1
Database Link:	<a href="#">NP_003827</a> <a href="#">Entrez Gene 13386 MouseEntrez Gene 114587 RatEntrez Gene 8788 Human P80370</a>
Background:	DLK1 Antibody: The Delta-like 1 homolog (DLK1) is a transmembrane protein containing six epidermal growth factor repeats. It is involved in the differentiation of several cell types, including adipocytes and is also thought to be a tumor suppressor. The DLK1 gene is one of several imprinted genes located in a region on chromosome 14q32; certain mutations in this imprinted region can cause phenotypes similar to maternal and paternal uniparental disomy of chromosome 14 (UPD14). DLK1 is expressed from the paternal allele; a polymorphism within this gene has been associated with child and adolescent obesity.
Synonyms:	Delta1; DLK; DLK-1; FA1; pG2; Pref-1; PREF1; ZOG



[View online »](#)

Protein Families: Druggable Genome, ES Cell Differentiation/IPS, Transmembrane

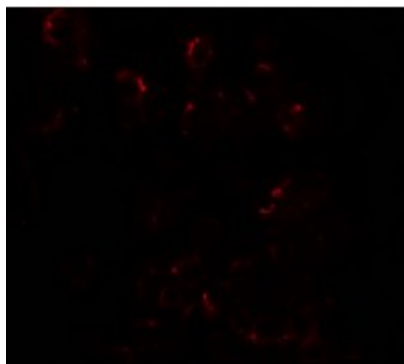
### Product images:



Western blot analysis of HepG2 in 293 cell lysate with DLK1 antibody at (A) 1 and (B) 2 ug/mL.



Immunocytochemistry of DLK1 in HepG2 cells with DLK1 antibody at 2.5 ug/mL.



Immunofluorescence of DLK1 in HepG2 cells with DLK1 antibody at 20 ug/mL.