

## Product datasheet for **TA319758**

### EED Rabbit Polyclonal Antibody

#### Product data:

Product Type:	Primary Antibodies
Applications:	IF, WB
Recommended Dilution:	WB: 1 ug/mL, IF: 20 ug/mL
Reactivity:	Human, Mouse, Rat
Host:	Rabbit
Isotype:	IgG
Clonality:	Polyclonal
Immunogen:	EED antibody was raised against an 18 amino acid synthetic peptide near the amino terminus of human EED. The immunogen is located within amino acids 30 - 80 of EED.
Formulation:	EED Antibody is supplied in PBS containing 0.02% sodium azide.
Concentration:	1ug/ul
Purification:	EED Antibody is affinity chromatography purified via peptide column.
Conjugation:	Unconjugated
Storage:	Store at -20°C as received.
Stability:	Stable for 12 months from date of receipt.
Predicted Protein Size:	49 kDa
Gene Name:	embryonic ectoderm development
Database Link:	<a href="#">NP_003788</a> <a href="#">Entrez Gene 13626 MouseEntrez Gene 293104 RatEntrez Gene 8726 Human O75530</a>

**Background:** EED Antibody: The EED protein (WAIT-1 or WD protein associated with integrin cytoplasmic tails-1), also called embryonic ectoderm development, is a member of the superfamily of WD-40 repeat proteins and widely conserved polycomb group (PcG) family of proteins. The polycomb group (PcG) is a large and evolutionarily conserved set of genes whose products act in multimeric complexes to modify histones, which are then thought to cause stable and heritable states of transcriptional repression. EED shuttles between the nucleus and the plasma membrane and can interact with the cytoplasmic tail of integrin  $\beta$ 7 subunit. EED exerted an antiviral activity at the late stage of HIV-1 replication.

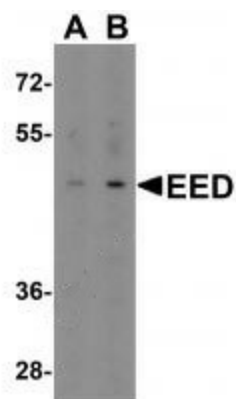


[View online »](#)

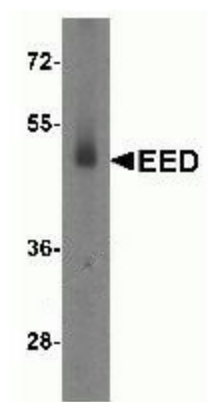
Synonyms: HEED; WAIT1

Protein Families: Druggable Genome, Transcription Factors

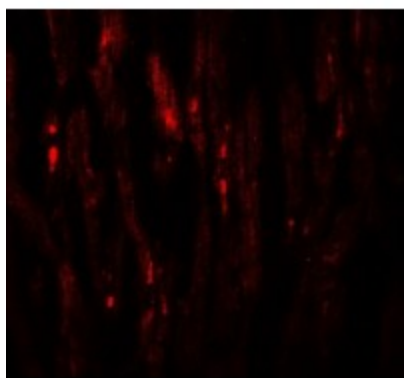
### Product images:



Western blot analysis of EED in human heart tissue lysate with EED antibody at (A) 1 and (B) 2ug/ml.



Western blot analysis of EED expression in human testis tissue lysate with EED antibody at 2ug/ml.



Immunofluorescence of EED in human heart tissue with EED antibody at 20ug/ml.