

Product datasheet for **TA319755**

Ribonuclease T2 (RNASET2) Rabbit Polyclonal Antibody

Product data:

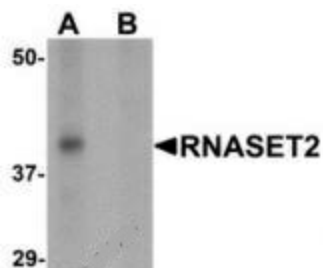
Product Type:	Primary Antibodies
Applications:	IF, WB
Recommended Dilution:	WB: 1 ug/mL
Reactivity:	Human, Mouse, Rat
Host:	Rabbit
Isotype:	IgG
Clonality:	Polyclonal
Immunogen:	RNASET2 antibody was raised against a 16 amino acid synthetic peptide near the carboxy terminus of human RNASET2.
Formulation:	RNASET2 Antibody is supplied in PBS containing 0.02% sodium azide.
Concentration:	1ug/ul
Purification:	RNASET2 Antibody is affinity chromatography purified via peptide column.
Conjugation:	Unconjugated
Storage:	Store at -20°C as received.
Stability:	Stable for 12 months from date of receipt.
Gene Name:	ribonuclease T2
Database Link:	NP_003721 Entrez Gene 292306 Rat Entrez Gene 8635 Human O00584
Background:	RNASET2 Antibody: RNASET2 is a novel member of the Rh/T2/S-glycoprotein class of extracellular ribonucleases. It is a single copy gene that maps to 6q27, a region associated with human malignancies and chromosomal rearrangement, and has been suggested to function as a tumor suppressor protein. Its expression is suppressed in Human T-cell Leukemia Virus type 1 (HTLV-1) infected cells following the binding of the HTLV-1 Tax protein to the RNASET2 promoter. As Adult T-cell leukemia (ATL) is one of the primary diseases caused by HTLV-1 infection, a reduction in the level of RNASET2 by Tax may play a role in ATL development.
Synonyms:	bA514O12.3; RNASE6PL



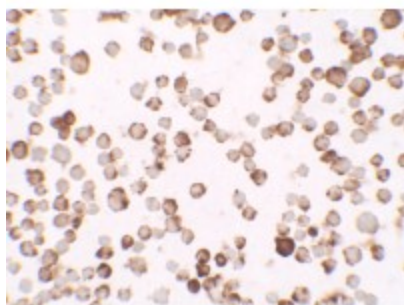
[View online »](#)

Protein Families: Secreted Protein

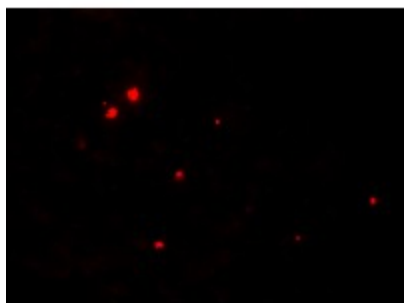
Product images:



Western blot analysis of RNASET2 in SW480 cell lysate with RNASET2 antibody at 1 ug/mL in (A) the absence and (B) the presence of blocking peptide.



Immunocytochemistry of RNASET2 in SW480 cells with RNASET2 antibody at 2.5 ug/mL.



Immunofluorescence of RNASET2 in SW480 cells with RNASET2 antibody at 5 ug/mL.