

Product datasheet for **TA319753**

CBX4 Rabbit Polyclonal Antibody

Product data:

Product Type:	Primary Antibodies
Applications:	IF, WB
Recommended Dilution:	WB: 1 ug/mL, IF: 20 ug/mL
Reactivity:	Human, Mouse, Rat
Host:	Rabbit
Isotype:	IgG
Clonality:	Polyclonal
Immunogen:	CBX4 antibody was raised against a 17 amino acid synthetic peptide near the amino terminus of human CBX4.
Formulation:	CBX4 Antibody is supplied in PBS containing 0.02% sodium azide.
Concentration:	1ug/ul
Purification:	CBX4 Antibody is affinity chromatography purified via peptide column.
Conjugation:	Unconjugated
Storage:	Store at -20°C as received.
Stability:	Stable for 12 months from date of receipt.
Predicted Protein Size:	62 kDa
Gene Name:	chromobox 4
Database Link:	NP_003646 Entrez Gene 12418 MouseEntrez Gene 501403 RatEntrez Gene 8535 Human O00257

Background: CBX4 Antibody: Polycomb group (PcG) proteins are chromatin-associated proteins which are important for embryonic and adult stem cell self-renewal and maintenance. At least two distinct human PcG complexes have been identified. Polycomb repressive complex I (PRC1) contains CBX4/Pc2, HPH1 and RING domain-containing proteins (RING1, RING2 and BMI1). CBX4 (Chromobox protein homolog 4 or PC2), which functions as a transcriptional suppressor, is a candidate of KyoT2-binding proteins. It is a E3 SUMO-protein ligase which facilitates SUMO1 conjugation. Depletion of CBX4 results in decreased cellular resistance to ionizing radiation. CBX4 is directly involved in the cellular response to DNA damage.

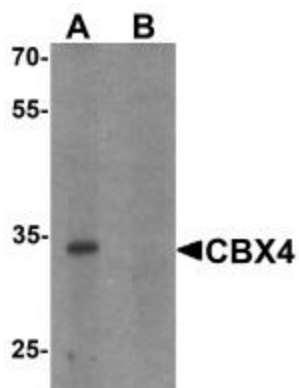


[View online »](#)

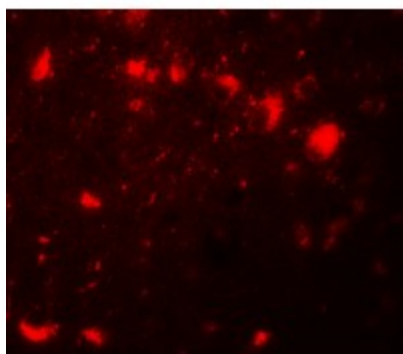
Synonyms: NBP16; PC2

Protein Families: Druggable Genome, Transcription Factors

Product images:



Western blot analysis of CBX4 in human brain tissue lysate with CBX4 antibody at 1 ug/ml in (A) the absence and (B) the presence of blocking peptide.



Immunofluorescence of CBX4 in human brain tissue with CBX4 antibody at 20 ug/mL.