

## Product datasheet for **TA319751**

### IFITM1 Rabbit Polyclonal Antibody

#### Product data:

Product Type:	Primary Antibodies
Applications:	WB
Recommended Dilution:	WB: 2.5 - 5 ug/mL
Reactivity:	Human
Host:	Rabbit
Isotype:	IgG
Clonality:	Polyclonal
Immunogen:	IFITM1 antibody was raised against a 14 amino acid synthetic peptide near the carboxy terminus of human IFITM1.
Formulation:	IFITM1 Antibody is supplied in PBS containing 0.02% sodium azide.
Concentration:	1ug/ul
Purification:	IFITM1 Antibody is affinity chromatography purified via peptide column.
Conjugation:	Unconjugated
Storage:	Store at -20°C as received.
Stability:	Stable for 12 months from date of receipt.
Gene Name:	interferon induced transmembrane protein 1
Database Link:	<a href="#">NP_003632</a> <a href="#">Entrez Gene 8519 Human P13164</a>
Background:	IFITM1 Antibody: IFITM1 (Interferon inducible transmembrane protein 1) is a member of the IFN-inducible transmembrane protein family. It is an essential mediator of interferon-gamma-induced antiproliferation and plays a role in the control of cell growth. IFITM1 is upregulated in several tumor types and may be useful as a tumor biomarker. Both mouse IFITM1 and IFITM3 are expressed on the cell surfaces of primordial germ cells in a developmentally-regulated manner. IFITM1 activity is required for primordial germ cell transit, and IFITM1 acts as a repulsive molecule by repelling non-IFITM1-expressing primordial germ cells from the mesoderm into the endoderm.
Synonyms:	9-27; CD225; DSPA2a; IFI17; LEU13

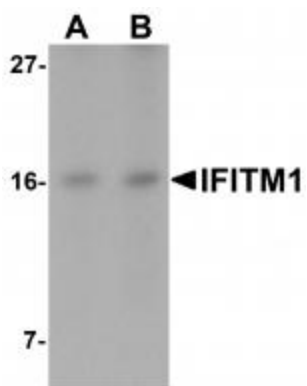


[View online »](#)

Protein Families: Druggable Genome, Transmembrane

Protein Pathways: B cell receptor signaling pathway

### Product images:



Western blot analysis of IFITM1 in Jurkat cell lysate with IFITM1 antibody at (A) 2.5 and (B) 5 ug/mL.