

Product datasheet for **TA319747**

BCAR3 Rabbit Polyclonal Antibody

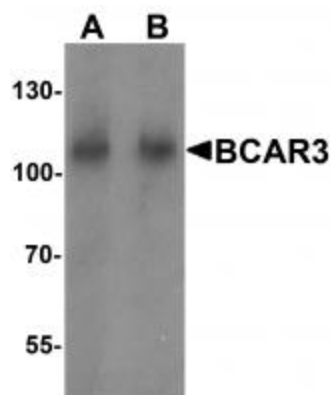
Product data:

Product Type:	Primary Antibodies
Applications:	IF, WB
Recommended Dilution:	WB: 1 - 2 ug/mL, IF: 20 ug/mL
Reactivity:	Human, Mouse, Rat
Host:	Rabbit
Isotype:	IgG
Clonality:	Polyclonal
Immunogen:	BCAR3 antibody was raised against a 16 amino acid synthetic peptide near the amino terminus of human BCAR3.
Formulation:	BCAR3 Antibody is supplied in PBS containing 0.02% sodium azide.
Concentration:	1ug/ul
Purification:	BCAR3 Antibody is affinity chromatography purified via peptide column.
Conjugation:	Unconjugated
Storage:	Store at -20°C as received.
Stability:	Stable for 12 months from date of receipt.
Predicted Protein Size:	91 kDa
Gene Name:	breast cancer anti-estrogen resistance 3
Database Link:	NP_003558 Entrez Gene 8412 Human Q75815
Background:	BCAR3 Antibody: Breast cancer anti-estrogen resistance 3 (BCAR3) was identified in the search for genes involved in the development of estrogen resistance. It contains a putative src homology 2 (SH2) domain and is partly homologous to the cell division cycle protein CDC48. BCAR3 is a binding partner with Cas, an adapter molecule that plays a role in cell proliferation, survival, cell adhesion, and mobility. BCAR3 functions synergistically with Cas to enhance Src activation and promote cell migration, and has been suggested to regulate Cas/Src association, Src kinase activity, and breast cancer adhesion signaling.
Synonyms:	NSP2; SH2D3B

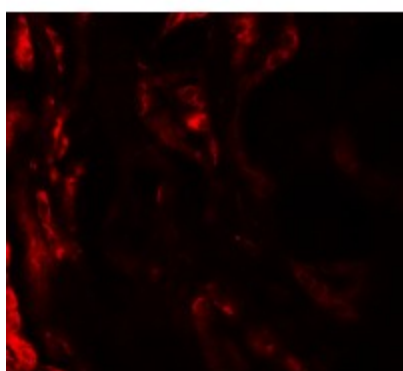


[View online »](#)

Product images:



Western blot analysis of BCAR3 in mouse kidney tissue lysate with BCAR3 antibody at A) 1 and (B) 2 ug/mL.



Immunofluorescence of BCAR3 in human kidney tissue with BCAR3 antibody at 20 ug/mL.