

Product datasheet for **TA319744**

Axin 1 (AXIN1) Rabbit Polyclonal Antibody

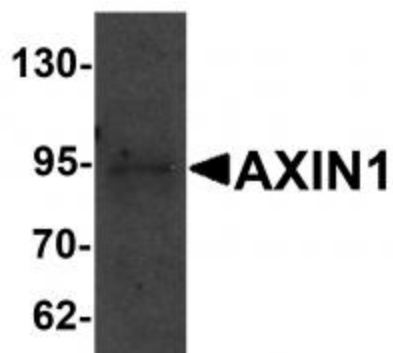
Product data:

Product Type:	Primary Antibodies
Applications:	IF, WB
Recommended Dilution:	WB: 1 - 2 ug/mL, IF: 20 ug/mL
Reactivity:	Human, Mouse, Rat
Host:	Rabbit
Isotype:	IgG
Clonality:	Polyclonal
Immunogen:	AXIN1 antibody was raised against a 14 amino acid synthetic peptide near the carboxy terminus of human AXIN1.
Formulation:	AXIN1 Antibody is supplied in PBS containing 0.02% sodium azide.
Concentration:	1ug/ul
Purification:	AXIN1 Antibody is affinity chromatography purified via peptide column.
Conjugation:	Unconjugated
Storage:	Store at -20°C as received.
Stability:	Stable for 12 months from date of receipt.
Gene Name:	axin 1
Database Link:	AAC51624 Entrez Gene 8312 Human Q15169
Background:	AXIN1 Antibody: AXIN1 is a cytoplasmic protein which contains a regulation of G-protein signaling (RGS) domain and a dishevelled and axin (DIX) domain and is thought to function as a negative regulator of the WNT signaling pathway that regulates embryonic axis formation. AXIN1 interacts with adenomatosis polyposis coli (APC), beta-catenin, glycogen synthase kinase 3 beta, forming a tetrameric complex resulting in the regulation of the stabilization of beta-catenin. Mutations in the AXIN1 gene have been associated various carcinomas, indicating that it also functions as a tumor suppressor.
Synonyms:	AXIN; PPP1R49

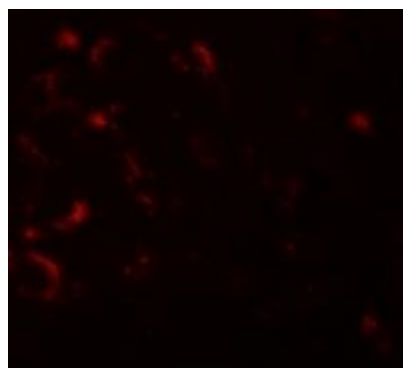


[View online »](#)

Product images:



Western blot analysis of AXIN1 in SK-N-SH cell lysate with AXIN1 antibody at 1 ug/mL.



Immunofluorescence of AXIN1 in human brain tissue with AXIN1 antibody at 20 ug/mL.