

## Product datasheet for **TA319743**

### AP3B2 Rabbit Polyclonal Antibody

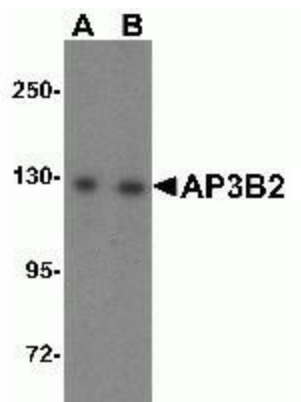
#### Product data:

Product Type:	Primary Antibodies
Applications:	IF, IHC, WB
Recommended Dilution:	WB: 1 - 2 ug/mL, ICC: 5 ug/mL, IF: 20 ug/mL
Reactivity:	Human, Mouse, Rat
Host:	Rabbit
Isotype:	IgG
Clonality:	Polyclonal
Immunogen:	AP3B2 antibody was raised against an 18 amino acid synthetic peptide near the amino terminus of human AP3B2. The immunogen is located within the first 50 amino acids of AP3B2.
Formulation:	AP3B2 Antibody is supplied in PBS containing 0.02% sodium azide.
Concentration:	1ug/ul
Purification:	AP3B2 Antibody is affinity chromatography purified via peptide column.
Conjugation:	Unconjugated
Storage:	Store at -20°C as received.
Stability:	Stable for 12 months from date of receipt.
Gene Name:	adaptor related protein complex 3 beta 2 subunit
Database Link:	<a href="#">NP_001265440</a> <a href="#">Entrez Gene 8120 Human</a> <a href="#">Q13367</a>
Background:	AP3B2 Antibody: The AP3 complex is a heterotetramer composed of two large adaptins (AP3D1, AP3B1 or AP3B2), a medium adaptin (AP3M1 or AP3M2) and a small adaptin (AP3S1 or AP3S2). The complex is associated with the Golgi region as well as more peripheral structures. It facilitates the budding of vesicles from the Golgi membrane and may be directly involved in trafficking to lysosomes. Unlike the homologous AP3B1, AP3B2-containing AP3 complexes are preferentially targeted to neuronal processes, and mice deficient in AP3B2 displayed compromised synaptic zinc stores.
Synonyms:	NAPT8

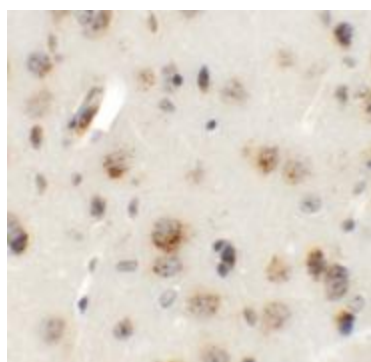


[View online »](#)

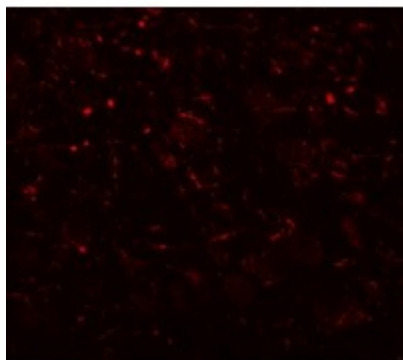
## Product images:



Western blot analysis of AP3B2 expression in mouse brain tissue lysate with AP3B2 antibody at (A) 1 and (B) 2ug/ml.



Immunohistochemistry of AP3B2 in mouse brain tissue with AP3B2 antibody at 5 ug/mL.



Immunofluorescence of AP3B2 in mouse brain tissue with AP3B2 antibody at 20ug/ml.