

Product datasheet for **TA319742**

EPM2A Rabbit Polyclonal Antibody

Product data:

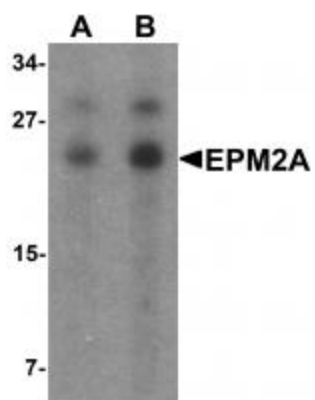
Product Type:	Primary Antibodies
Applications:	IF, WB
Recommended Dilution:	WB: 1 - 2 ug/mL
Reactivity:	Human, Mouse, Rat
Host:	Rabbit
Isotype:	IgG
Clonality:	Polyclonal
Immunogen:	EPM2A antibody was raised against a 17 amino acid synthetic peptide near the carboxy terminus of human EPM2A.
Formulation:	EPM2A Antibody is supplied in PBS containing 0.02% sodium azide.
Concentration:	1ug/ul
Purification:	EPM2A Antibody is affinity chromatography purified via peptide column.
Conjugation:	Unconjugated
Storage:	Store at -20°C as received.
Stability:	Stable for 12 months from date of receipt.
Predicted Protein Size:	36 kDa
Gene Name:	epilepsy, progressive myoclonus type 2A, Lafora disease (laforin)
Database Link:	NP_005661 Entrez Gene 13853 MouseEntrez Gene 114005 RatEntrez Gene 7957 Human O95278
Background:	EPM2A Antibody: The Epilepsy, progressive myoclonus type 2A protein (EPM2A) is a dual-specificity phosphatase that associates with polyribosomes. Mutations in this gene have been associated with myoclonic epilepsy of Lafora. EPM2A interacts with a number of proteins known to be involved in glycogen metabolism and has been shown to have robust phosphatase activity against a phosphorylated complex carbohydrate, suggesting that EPM2A may be involved in the regulation of glycogen metabolism.
Synonyms:	EPM2; MELF



[View online »](#)

Protein Families: Druggable Genome, Phosphatase

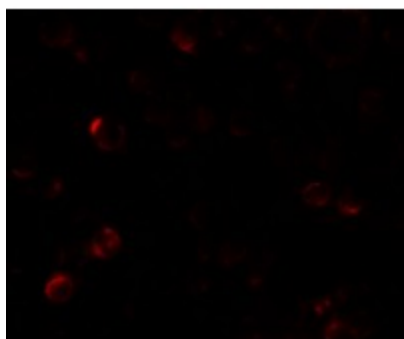
Product images:



Western blot analysis of SW480 in SW480 cell lysate with EPM2A antibody at (A) 1 and (B) 2 ug/mL.



Immunocytochemistry of EPM2A in SW480 cells with EPM2A antibody at 2.5 ug/mL.



Immunofluorescence of EPM2A in SW480 cells with EPM2A antibody at 5 ug/mL.