

Product datasheet for **TA319741**

TFEB Rabbit Polyclonal Antibody

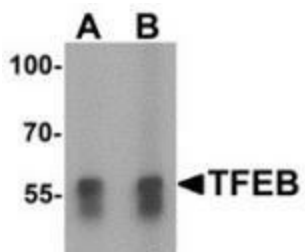
Product data:

Product Type:	Primary Antibodies
Applications:	IF, IHC, WB
Recommended Dilution:	WB: 1 - 2 ug/mL, ICC: 2.5 ug/mL
Reactivity:	Human
Host:	Rabbit
Isotype:	IgG
Clonality:	Polyclonal
Immunogen:	TFEB antibody was raised against an 18 amino acid synthetic peptide near the amino terminus of human TFEB.
Formulation:	TFEB Antibody is supplied in PBS containing 0.02% sodium azide.
Concentration:	1ug/ul
Purification:	TFEB Antibody is affinity chromatography purified via peptide column.
Conjugation:	Unconjugated
Storage:	Antibody can be stored at 4°C up to one year. Antibodies should not be exposed to prolonged high temperatures.
Stability:	Stable for 12 months from date of receipt.
Gene Name:	transcription factor EB
Database Link:	NP_009093 Entrez Gene 7942 Human P19484
Background:	TFEB Antibody: The Transcription factor EB (TFEB) is a member in the basic helix-loop-helix leucine zipper superfamily of transcription factors that is translocated in a subset of renal tumors. Recent studies have shown that lysosomal biogenesis is regulated by TFEB, which is in turn regulated by the mammalian target of rapamycin (mTOR) complex 1. Other evidence suggests that TFEB coordinates the major steps of the autophagic pathway by driving the expression of autophagy and lysosomal genes.
Synonyms:	ALPHATFEB; BHLHE35; TCFEB

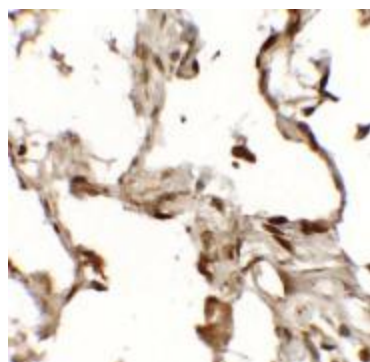


[View online »](#)

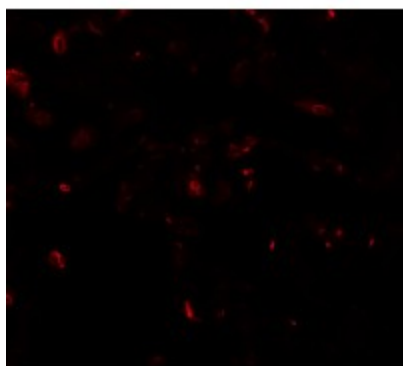
Product images:



Western blot analysis of TFEB in A549 cell lysate with TFEB antibody at (A) 1 and (B) 2 ug/mL.



Immunohistochemistry of TFEB (NT) in human lung tissue with TFEB (NT) antibody at 2.5 ug/mL.



Immunofluorescence of TFEB in human lung tissue with TFEB antibody at 20 ug/mL.