

## Product datasheet for **TA319738**

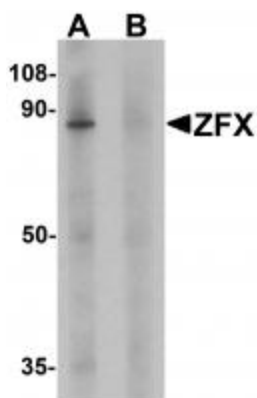
### ZFX Rabbit Polyclonal Antibody

#### Product data:

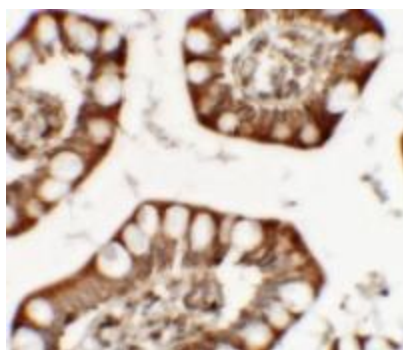
Product Type:	Primary Antibodies
Applications:	IF, IHC, WB
Recommended Dilution:	WB: 1 ug/mL, ICC: 5 ug/mL, IF: 5 ug/mL
Reactivity:	Human, Mouse, Rat
Host:	Rabbit
Isotype:	IgG
Clonality:	Polyclonal
Immunogen:	ZFX antibody was raised against a 19 amino acid synthetic peptide near the carboxy terminus of human ZFX.
Formulation:	ZFX Antibody is supplied in PBS containing 0.02% sodium azide.
Concentration:	1ug/ul
Purification:	ZFX Antibody is affinity chromatography purified via peptide column.
Conjugation:	Unconjugated
Storage:	Store at -20°C as received.
Stability:	Stable for 12 months from date of receipt.
Gene Name:	zinc finger protein, X-linked
Database Link:	<a href="#">NP_003401</a> <a href="#">Entrez Gene 22764 Mouse</a> <a href="#">Entrez Gene 367832 Rat</a> <a href="#">Entrez Gene 7543 Human</a> <a href="#">P17010</a>
Background:	ZFX Antibody: The X-linked zinc finger protein ZFX is a member of the Kruppel C2H2-type zinc-finger protein family. The full-length protein contains an acidic transcriptional activation domain (AD), a nuclear localization sequence (NLS) and a DNA binding domain (DBD) consisting of 13 C2H2-type zinc fingers. Studies in mouse embryonic and adult hematopoietic stem cells showed that this gene was required as a transcriptional regulator for self-renewal of both stem cell types, but it was dispensable for growth and differentiation of their progeny.
Synonyms:	ZNF926
Protein Families:	Transcription Factors



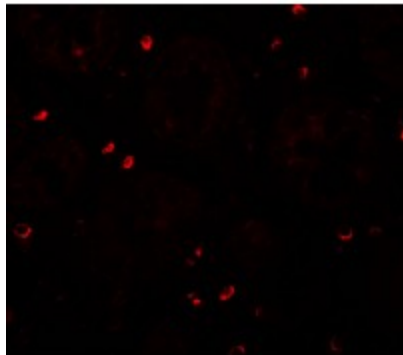
[View online »](#)

**Product images:**

Western blot analysis of ZFX human small intestine tissue lysate with ZFX antibody at 1 ug/ml in (A) the absence and (B) the presence of blocking peptide.



Immunohistochemistry of ZFX in human small intestine tissue with ZFX antibody at 5 ug/mL.



Immunofluorescence of ZFX in human small intestine tissue with ZFX antibody at 20 ug/mL.