

Product datasheet for **TA319732**

TYK2 Rabbit Polyclonal Antibody

Product data:

Product Type:	Primary Antibodies
Applications:	WB
Recommended Dilution:	WB: 1 - 2 ug/mL
Reactivity:	Human, Mouse, Rat
Host:	Rabbit
Isotype:	IgG
Clonality:	Polyclonal
Immunogen:	Rabbit polyclonal TYK2 antibody was raised against a 17 amino acid peptide near the amino terminus of human TYK2.
Formulation:	TYK2 Antibody is supplied in PBS containing 0.02% sodium azide.
Concentration:	1ug/ul
Purification:	TYK2 Antibody is affinity chromatography purified via peptide column.
Conjugation:	Unconjugated
Storage:	Store at -20°C as received.
Stability:	Stable for 12 months from date of receipt.
Predicted Protein Size:	131 kDa
Gene Name:	tyrosine kinase 2
Database Link:	NP_003322 Entrez Gene 54721 MouseEntrez Gene 100361294 RatEntrez Gene 7297 Human P29597
Background:	TYK2 Antibody: TYK2 is a member of the Janus kinases (JAKs) protein families. TYK2 associates with the cytoplasmic domain of type I and type II cytokine receptors and promulgate cytokine signals by phosphorylating receptor subunits and is also a component of both the type I and type III interferon signaling pathways. As such, it may play a role in anti-viral immunity. A mutation in this gene has been associated with hyperimmunoglobulin E syndrome (HIES) - a primary immunodeficiency characterized by elevated serum immunoglobulin E.
Synonyms:	IMD35; JTK1

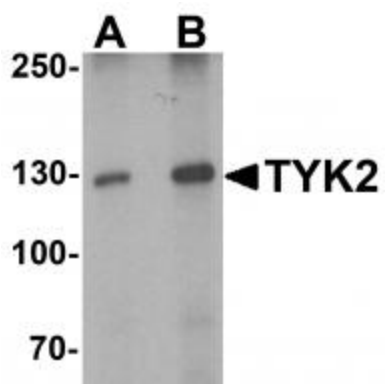


[View online »](#)

Protein Families: Druggable Genome, Protein Kinase

Protein Pathways: Jak-STAT signaling pathway

Product images:



Western blot analysis of TYK2 in human small intestine tissue lysate with TYK2 antibody at (A) 1 and (B) 2 ug/mL