

## Product datasheet for **TA319730**

### alpha Tubulin (TUBA3C) Rabbit Polyclonal Antibody

#### Product data:

Product Type:	Primary Antibodies
Applications:	WB
Recommended Dilution:	WB: 0.5 and 1 ug/mL
Reactivity:	Human, Mouse, Rat
Host:	Rabbit
Isotype:	IgG
Clonality:	Polyclonal
Immunogen:	Rabbit polyclonal Tubulin antibody was raised against a 16 amino acid peptide near the amino terminus of human Tubulin.
Formulation:	Alpha-tubulin Antibody is supplied in PBS containing 0.02% sodium azide.
Concentration:	1ug/ul
Purification:	Alpha-tubulin Antibody is affinity chromatography purified via peptide column.
Conjugation:	Unconjugated
Storage:	Store at -20°C as received.
Stability:	Stable for 12 months from date of receipt.
Predicted Protein Size:	50 kDa
Gene Name:	tubulin alpha 3c
Database Link:	<a href="#">NP_005992</a> <a href="#">Entrez Gene 7278 Human</a> <a href="#">Q13748</a>



[View online »](#)

**Background:**

Alpha-tubulin Antibody: Alpha-tubulin belongs to the tubulin superfamily, which is composed of six distinct families. Along with beta-tubulins, alpha-tubulins are the major components of microtubules. These microtubules are involved in a wide variety of cellular activities ranging from mitosis and transport events to cell movement and the maintenance of cell shape. Alpha- and beta-tubulin dimers are assembled to 13 protofilaments that form a microtubule of 22-nm diameter. Tyrosine ligase adds a C-terminal tyrosine to monomeric alpha-tubulin. Assembled microtubules can again be detyrosinated by a cytoskeleton-associated carboxypeptidase. Another post-translational modification of detyrosinated alpha-tubulin is C-terminal polyglutamylation, which is characteristic of microtubules in neuronal cells and the mitotic spindle. Like GAPDH and beta-Actin, this antibody makes an excellent loading control in immunoblots.

**Synonyms:**

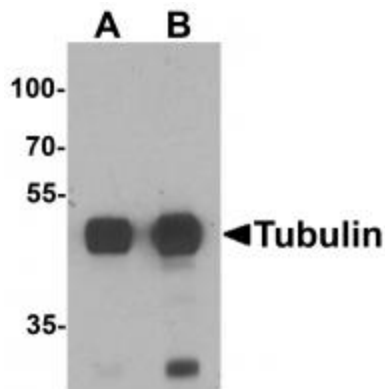
bA408E5.3; TUBA2

**Protein Families:**

Druggable Genome, Stem cell - Pluripotency

**Protein Pathways:**

Gap junction, Pathogenic Escherichia coli infection

**Product images:**

Western blot analysis of Tubulin in mouse brain tissue lysate with Tubulin antibody at (A) 0.5 and (B) 1 ug/mL.