

Product datasheet for **TA319729**

TSPY1 Rabbit Polyclonal Antibody

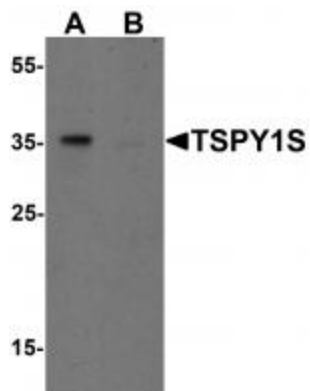
Product data:

Product Type:	Primary Antibodies
Applications:	WB
Recommended Dilution:	WB: 1 - 2 ug/mL
Reactivity:	Human, Mouse
Host:	Rabbit
Isotype:	IgG
Clonality:	Polyclonal
Immunogen:	Rabbit polyclonal TSPY1S antibody was raised against a 13 amino acid peptide near the carboxy terminus of human TSPY1S.
Formulation:	TSPY1S Antibody is supplied in PBS containing 0.02% sodium azide.
Concentration:	1ug/ul
Purification:	TSPY1S Antibody is affinity chromatography purified via peptide column.
Conjugation:	Unconjugated
Storage:	Store at -20°C as received.
Stability:	Stable for 12 months from date of receipt.
Predicted Protein Size:	32 kDa
Gene Name:	testis specific protein, Y-linked 1
Database Link:	NP_001184171 Entrez Gene 7258 Human Q01534
Background:	TSPY1S Antibody: Testis-specific protein on Y chromosome (TSPY1) is an ampliconic gene on the Y chromosome that has been associated with gonadoblastoma. Recent experiments have shown that in androgen-dependent testicular germ-cell tumors, TSPY1 can repress the androgen-bound androgen receptor (AR), a member of the nuclear steroid hormone receptor family that acts as a ligand-inducible transcription factor, suggesting that TSPY1 is a repressor of cell proliferation in germ-cell tumors and potentially in normal gonadal cells during early development. Two distinct isoforms of TSPY1, TSPY1L and TSPY1S, are known to exist.
Synonyms:	CT78; DYS14; pJA923; TSPY



[View online »](#)

Product images:



Western blot analysis of TSPY1S in A20 cell lysate with TSPY1S antibody at 1 ug/mL in (A) the absence and (B) the presence of blocking peptide.