

Product datasheet for **TA319727**

Translin (TSN) Rabbit Polyclonal Antibody

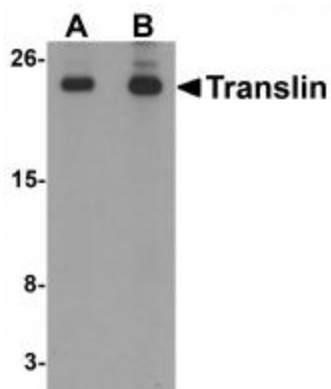
Product data:

Product Type:	Primary Antibodies
Applications:	IF, IHC, WB
Recommended Dilution:	WB: 0.5 - 1 ug/mL, ICC: 5 ug/mL, IF: 20 ug/mL
Reactivity:	Human, Mouse, Rat
Host:	Rabbit
Isotype:	IgG
Clonality:	Polyclonal
Immunogen:	Translin antibody was raised against a 20 amino acid synthetic peptide near the carboxy terminus of human Translin.
Formulation:	Translin Antibody is supplied in PBS containing 0.02% sodium azide.
Concentration:	1ug/ul
Purification:	Translin Antibody is affinity chromatography purified via peptide column.
Conjugation:	Unconjugated
Storage:	Store at -20°C as received.
Stability:	Stable for 12 months from date of receipt.
Gene Name:	translin
Database Link:	NP_004613 Entrez Gene 22099 Mouse Entrez Gene 60381 Rat Entrez Gene 7247 Human Q15631
Background:	Translin Antibody: Translin is a DNA-binding protein which specifically recognizes conserved target sequences at the breakpoint junction of chromosomal translocations. Translin polypeptides form a multimeric structure that is responsible for its DNA-binding activity. Recombination-associated motifs and translin-binding sites are present at recombination hotspots and may serve as indicators of breakpoints in genes which are fused by translocations. These binding activities may play a crucial role in chromosomal translocation in lymphoid neoplasms. Recent evidence suggests that in combination with a binding partner Trax, Translin binds RNA and mediates trafficking in neurons.
Synonyms:	BCLF-1; C3PO; RCHF1; REHF-1; TBRBP; TRSLN

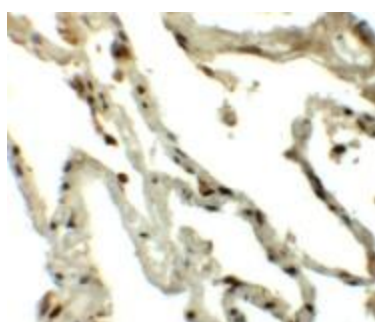


[View online »](#)

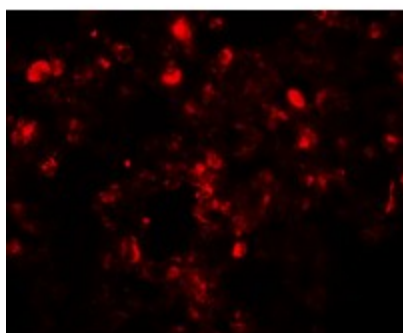
Product images:



Western blot analysis of Translin in rat lung tissue lysate with Translin antibody at (A) 0.5 and (B) 1 ug/mL



Immunohistochemistry of Translin in human lung tissue with Translin antibody at 5 ug/mL.



Immunofluorescence of Translin in human lung tissue with Translin antibody at 20 ug/mL.