

## Product datasheet for **TA319722**

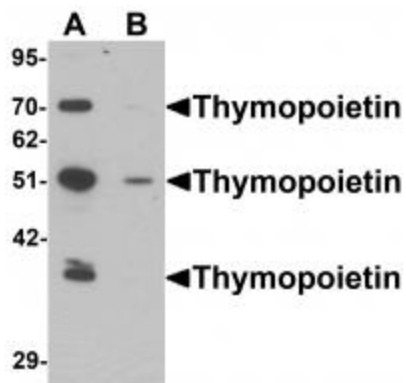
### LAP2 (TMPO) Rabbit Polyclonal Antibody

#### Product data:

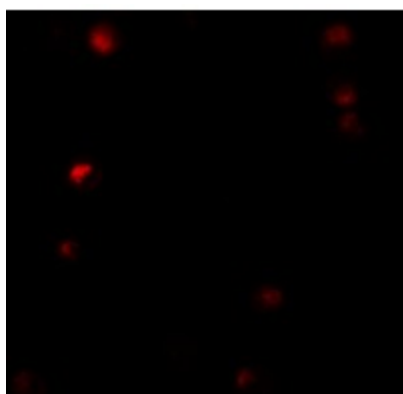
Product Type:	Primary Antibodies
Applications:	IF, WB
Recommended Dilution:	WB: 0.25 ug/mL, IF: 5 ug/mL
Reactivity:	Human, Mouse
Host:	Rabbit
Isotype:	IgG
Clonality:	Polyclonal
Immunogen:	Thymopoietin antibody was raised against a 19 amino acid synthetic peptide near the amino terminus of human Thymopoietin.
Formulation:	Thymopoietin Antibody is supplied in PBS containing 0.02% sodium azide.
Concentration:	1ug/ul
Purification:	Thymopoietin Antibody is affinity chromatography purified via peptide column.
Conjugation:	Unconjugated
Storage:	Store at -20°C as received.
Stability:	Stable for 12 months from date of receipt.
Gene Name:	thymopoietin
Database Link:	<a href="#">NP_003267</a> <a href="#">Entrez Gene 7112 Human P42166</a>
Background:	Thymopoietin Antibody: Thymopoietin (TMPO), also known as LAP2, is a widely expressed lem-domain-containing nuclear protein that is thought to play an important role in the regulation of nuclear architecture by binding lamin B1 and chromosomes in a manner regulated by phosphorylation during mitosis. Thymopoietin associates with nucleoplasmic lamins A/C, which are encoded by the dilated cardiomyopathy (DCM) gene LMNA; mutations in Thymopoietin disrupt this binding, suggesting that Thymopoietin may be a candidate disease gene for DCM.
Synonyms:	CMD1T; LAP2; LEMD4; PRO0868; TP



[View online »](#)

**Product images:**


Western blot analysis of Thymopoietin in HeLa cell lysate with Thymopoietin antibody at 0.25 ug/mL in (A) the absence and (B) the presence of blocking peptide.



Immunofluorescence of Thymopoietin in HeLa cells with Thymopoietin antibody at 5 ug/mL.



Immunocytochemistry of Thymopoietin in HeLa cells with Thymopoietin antibody at 2.5 ug/mL.