

Product datasheet for **TA319720**

SEC62 Rabbit Polyclonal Antibody

Product data:

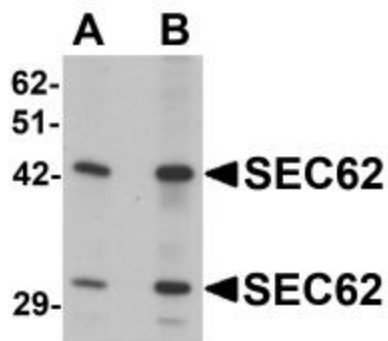
Product Type:	Primary Antibodies
Applications:	IF, IHC, WB
Recommended Dilution:	WB: 0.5 - 1 ug/mL, ICC: 5 ug/mL, IF: 20 ug/mL
Reactivity:	Human, Mouse, Rat
Host:	Rabbit
Isotype:	IgG
Clonality:	Polyclonal
Immunogen:	SEC62 antibody was raised against an 18 amino acid synthetic peptide near the carboxy terminus of human SEC62.
Formulation:	SEC62 Antibody is supplied in PBS containing 0.02% sodium azide.
Concentration:	1ug/ul
Purification:	SEC62 Antibody is affinity chromatography purified via peptide column.
Conjugation:	Unconjugated
Storage:	Store at -20°C as received.
Stability:	Stable for 12 months from date of receipt.
Gene Name:	SEC62 homolog, preprotein translocation factor
Database Link:	NP_003253 Entrez Gene 69276 Mouse Entrez Gene 294912 Rat Entrez Gene 7095 Human Q99442
Background:	SEC62 Antibody: SEC62 is an integral membrane protein located in the rough endoplasmic reticulum (ER) and is part of the SEC61-SEC62-SEC63 complex that is the central component of the protein translocation apparatus of the ER membrane. It is speculated that SEC61-SEC62-SEC63 may perform post-translational protein translocation into the ER and might also perform the backward transport of ER proteins that are subject to the ubiquitin-proteasome-dependent degradation pathway. Silencing of this gene with RNAi dramatically reduced the migration and invasive potential of numerous tumor cell lines, suggesting that it may be an attractive target for therapy of various tumors.
Synonyms:	Dtrp1; HTP1; TLOC1; TP-1



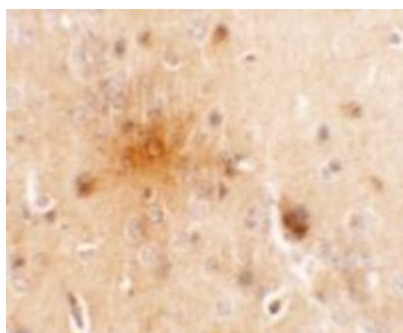
[View online »](#)

Protein Families: Druggable Genome, Transmembrane

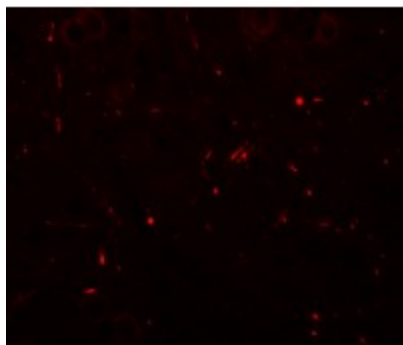
Product images:



Western blot analysis of SEC62 in rat brain tissue lysate with SEC62 antibody at (A) 0.5 and (B) 1 ug/mL.



Immunohistochemistry of SEC62 in mouse brain tissue with SEC62 antibody at 5 ug/mL.



Immunofluorescence of SEC62 in mouse brain tissue with SEC62 antibody at 20 ug/mL.