

## Product datasheet for **TA319719**

### TTF1 (NKX2-1) Rabbit Polyclonal Antibody

#### Product data:

Product Type:	Primary Antibodies
Applications:	IF, IHC, WB
Recommended Dilution:	WB: 1 - 2 ug/mL, ICC: 2.5 ug/mL, IF: 20 ug/mL
Reactivity:	Human, Mouse, Rat
Host:	Rabbit
Isotype:	IgG
Clonality:	Polyclonal
Immunogen:	NKX2-1 antibody was raised against a 16 amino acid synthetic peptide near the amino terminus of human NKX2-1. The immunogen is located within the first 50 amino acids of NKX2-1.
Formulation:	NKX2-1 Antibody is supplied in PBS containing 0.02% sodium azide.
Concentration:	1ug/ul
Purification:	NKX2-1 Antibody is affinity chromatography purified via peptide column.
Conjugation:	Unconjugated
Storage:	Store at -20°C as received.
Stability:	Stable for 12 months from date of receipt.
Gene Name:	NK2 homeobox 1
Database Link:	<a href="#">NP_001073136</a> <a href="#">Entrez Gene 21869 Mouse</a> <a href="#">Entrez Gene 25628 Rat</a> <a href="#">Entrez Gene 7080 Human</a> <a href="#">P43699</a>
Background:	NKX2-1 Antibody: NKX2-1 (NK2 homeobox 1) has been identified as a thyroid-specific transcription factor that binds and activates the promoter of thyroid specific genes such as thyroglobulin and thyrotropin receptor. NKX2-1 is crucial in the maintenance of the thyroid differentiation phenotype and morphogenesis. It contains one homeobox DNA-binding domain. NKX2-1 also may play a role in lung development and surfactant homeostasis. Mutations and deletions in this gene are associated with benign hereditary chorea, congenital hypothyroidism, neonatal respiratory distress, and may be associated with thyroid cancer. NKX2-1 has been suggested to be a candidate suppressor of malignant progression.

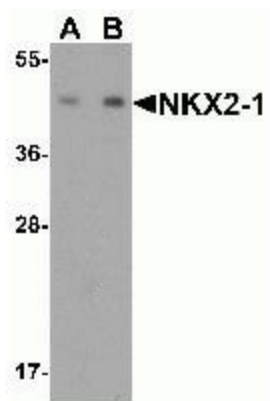


[View online »](#)

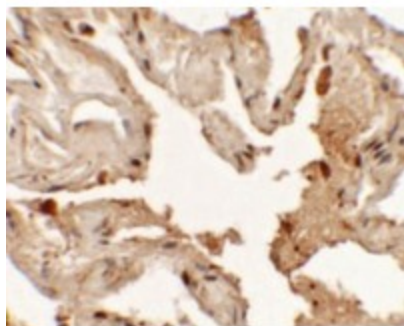
**Synonyms:** BCH; BHC; NK-2; NKX2.1; NKX2A; TEBP; TITF1; TTF-1; TTF1

**Protein Families:** Druggable Genome, ES Cell Differentiation/IPS, Transcription Factors

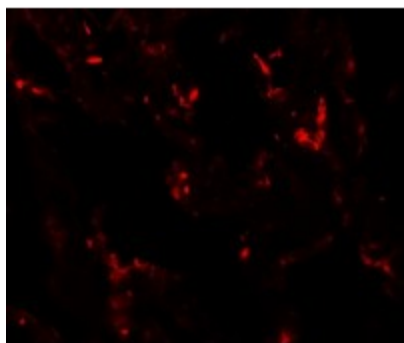
**Product images:**



Western blot analysis of NKX2-1 expression in human lung tissue lysate with NKX2-1 antibody at (A) 0.25 and (B) 0.5ug/ml.



Immunohistochemistry of NKX2-1 in human lung tissue with NKX2-1 antibody at 2.5ug/ml.



Immunofluorescence of NKX2-1 in human lung tissue with NKX2-1 antibody at 20ug/ml.