

Product datasheet for **TA319716**

Cripto1 (TDGF1) Rabbit Polyclonal Antibody

Product data:

Product Type:	Primary Antibodies
Applications:	IF, WB
Recommended Dilution:	WB: 1 - 2 ug/mL, IF: 20 ug/mL
Reactivity:	Human, Mouse, Rat
Host:	Rabbit
Isotype:	IgG
Clonality:	Polyclonal
Immunogen:	Rabbit polyclonal TDGF1 antibody was raised against a 17 amino acid peptide near the amino terminus of human TDGF1.
Formulation:	TDGF1 Antibody is supplied in PBS containing 0.02% sodium azide.
Concentration:	1ug/ul
Purification:	TDGF1 Antibody is affinity chromatography purified via peptide column.
Conjugation:	Unconjugated
Storage:	Store at -20°C as received.
Stability:	Stable for 12 months from date of receipt.
Predicted Protein Size:	21 kDa
Gene Name:	teratocarcinoma-derived growth factor 1
Database Link:	NP_003203 Entrez Gene 6997 Human P13385

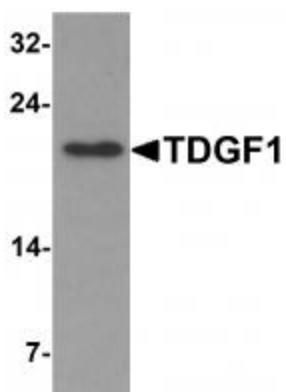
Background: TDGF1 Antibody: Teratocarcinoma-derived growth factor 1 (TDGF1 or Cripto) is a member of the epidermal growth factor-cripto FRL1 cryptic protein family and is involved in the activation of several different signaling pathways during embryonic development and cellular transformation. It is first expressed in the forming mesoderm during gastrulation but later in development the expression is restricted to the truncus arteriosus of the developing heart. This suggests that TDGF1 mediates the progression of epiblastic cells that give rise to the mesoderm. TDGF1 overexpression is characteristic of human gastric and colorectal carcinomas.



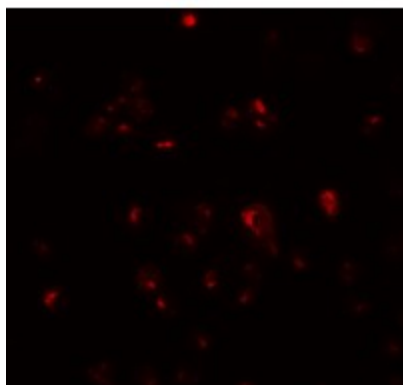
[View online »](#)

Synonyms: CR; CRGF; CRIPTO

Product images:



Western blot analysis of TDGF1 in 293 cell lysate with TDGF1 antibody at 1 ug/mL.



Immunofluorescence of TDGF1 in 293 cells with TDGF1 antibody at 20 ug/mL.