

## Product datasheet for **TA319713**

### **AREB6 (ZEB1) Rabbit Polyclonal Antibody**

#### **Product data:**

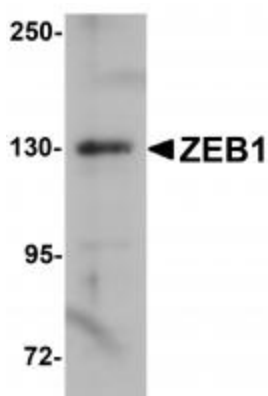
<b>Product Type:</b>	Primary Antibodies
<b>Applications:</b>	IF, WB
<b>Recommended Dilution:</b>	WB: 1 ug/mL, ICC: 20 ug/mL, IF: 20 ug/mL
<b>Reactivity:</b>	Human
<b>Host:</b>	Rabbit
<b>Isotype:</b>	IgG
<b>Clonality:</b>	Polyclonal
<b>Immunogen:</b>	ZEB1 antibody was raised against a 15 amino acid synthetic peptide near the center of human ZEB1.
<b>Formulation:</b>	ZEB1 Antibody is supplied in PBS containing 0.02% sodium azide.
<b>Concentration:</b>	1ug/ul
<b>Purification:</b>	ZEB1 Antibody is affinity chromatography purified via peptide column.
<b>Conjugation:</b>	Unconjugated
<b>Storage:</b>	Antibody can be stored at 4°C up to one year. Antibodies should not be exposed to prolonged high temperatures.
<b>Stability:</b>	Stable for 12 months from date of receipt.
<b>Gene Name:</b>	zinc finger E-box binding homeobox 1
<b>Database Link:</b>	<a href="#">NP_110378</a> <a href="#">Entrez Gene 6935 Human P37275</a>
<b>Background:</b>	ZEB1 Antibody: ZEB1, initially identified as the delta-crystallin enhancer binding protein delta EF1, is a DNA-binding protein that binds to a modified E-box sequence and has been implicated in postgastrulation embryogenesis. ZEB1 binds to the promoter of several hemopoietic genes, including interleukin-2, CD4, GATA-3, and alpha-integrin, and mice in which ZEB1 has been targeted show thymic atrophy, and severe defects in lymphocyte differentiation. Recent evidence suggests that ZEB1 also regulates the accumulation of adipose tissue and may play a role in obesity. Mutations in this gene have been associated with late-onset Fuchs endothelial corneal dystrophy.



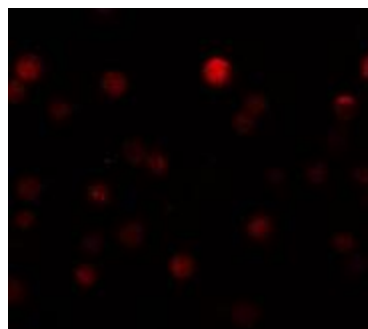
[View online »](#)

Synonyms: AREB6; BZP; DELTAEF1; FECD6; NIL2A; PPCD3; TCF8; ZFHEP; ZFHX1A

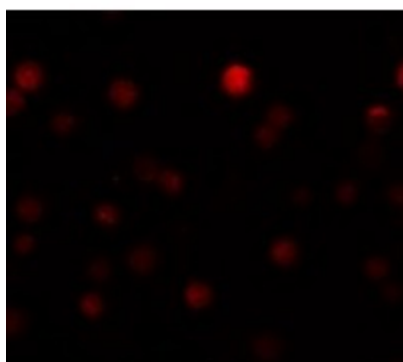
### Product images:



Western blot analysis of ZEB1 in HeLa cell lysate with ZEB1 antibody at 1ug/mL.



Immunocytochemistry of ZEB1 in HeLa cells with ZEB1 antibody at 20 ug/mL.



Immunofluorescence of ZEB1 in HeLa cells with ZEB1 antibody at 20 ug/mL.