

## Product datasheet for **TA319711**

### Staufen (STAU1) Rabbit Polyclonal Antibody

#### Product data:

Product Type:	Primary Antibodies
Applications:	IF, IHC, WB
Recommended Dilution:	WB: 1 - 2 ug/mL, ICC: 10 ug/mL, IF: 20 ug/mL
Reactivity:	Human, Mouse, Rat
Host:	Rabbit
Isotype:	IgG
Clonality:	Polyclonal
Immunogen:	STAU1 antibody was raised against a 15 amino acid synthetic peptide near the carboxy terminus of human STAU1.
Formulation:	STAU1 Antibody is supplied in PBS containing 0.02% sodium azide.
Concentration:	1 mg/ml
Purification:	STAU1 Antibody is affinity chromatography purified via peptide column.
Conjugation:	Unconjugated
Storage:	Store at -20°C as received.
Stability:	Stable for 12 months from date of receipt.
Gene Name:	staufen double-stranded RNA binding protein 1
Database Link:	<a href="#">NP_059347</a> <a href="#">Entrez Gene 6780 Human</a> <a href="#">O95793</a>



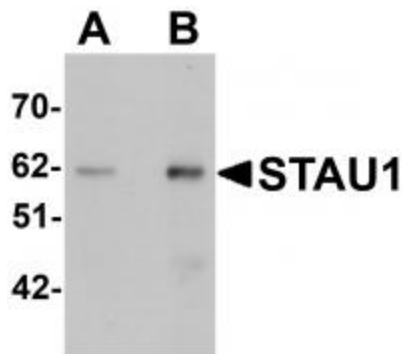
[View online »](#)

**Background:**

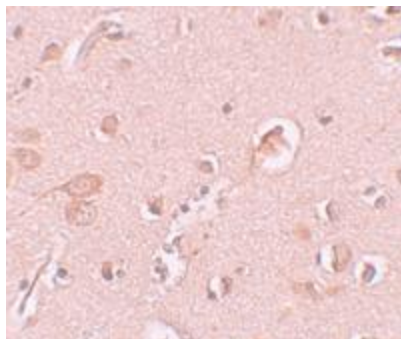
STAU1 Antibody: STAU1 is a member of a family of double-stranded RNA (dsRNA)-binding proteins involved in the transport and/or localization of mRNAs to different subcellular compartments and/or organelles. These proteins are characterized by the presence of multiple dsRNA-binding domains which are required to bind RNAs having double-stranded secondary structures. The human STAU1 also contains a microtubule-binding domain similar to that of microtubule-associated protein 1B, and binds tubulin. STAU1 has been shown to be present in the cytoplasm in association with the rough endoplasmic reticulum (RER), implicating this protein in the transport of mRNA via the microtubule network to the RER. STAU1 is also known to interact with influenza ribonucleoproteins NS1, NP, and PA and is required for efficient viral replication.

**Synonyms:**

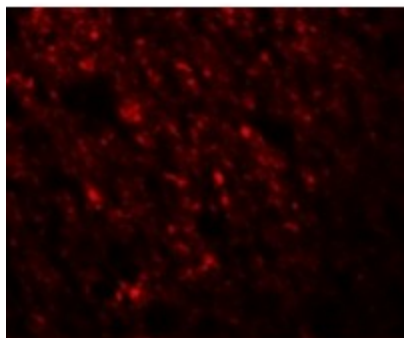
PPP1R150; STAU

**Product images:**

Western blot analysis of STAU1 in rat brain tissue lysate with STAU1 antibody at (A) 1 and (B) 2 ug/mL.



Immunohistochemistry of STAU1 in human brain tissue with STAU1 antibody at 10 ug/mL.



Immunofluorescence of STAU1 in Human Brain cells with STAU1 antibody at 20 ug/mL.