

Product datasheet for **TA319709**

STAT1 Rabbit Polyclonal Antibody

Product data:

Product Type:	Primary Antibodies
Applications:	IF, WB
Recommended Dilution:	WB: 1 - 2 ug/mL
Reactivity:	Human
Host:	Rabbit
Isotype:	IgG
Clonality:	Polyclonal
Immunogen:	Rabbit polyclonal STAT1 antibody was raised against a 15 amino acid peptide near the carboxy terminus of human STAT1.
Formulation:	STAT1 Antibody is supplied in PBS containing 0.02% sodium azide.
Concentration:	1ug/ul
Purification:	STAT1 Antibody is affinity chromatography purified via peptide column.
Conjugation:	Unconjugated
Storage:	Store at -20°C as received.
Stability:	Stable for 12 months from date of receipt.
Predicted Protein Size:	83 kDa
Gene Name:	signal transducer and activator of transcription 1
Database Link:	NP_009330 Entrez Gene 6772 Human P42224



[View online »](#)

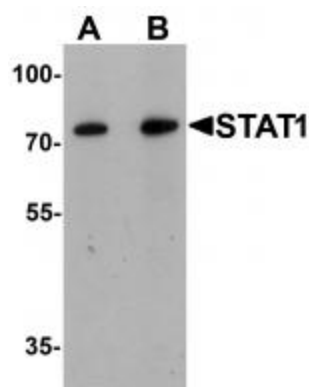
Background: STAT1 Antibody: STATs (signal transducers and activators of transcription) are a family of cytoplasmic latent transcription factors that are activated to regulate gene expression in response to a large number of extracellular signaling polypeptides including cytokines, interferons, and growth factors. After phosphorylation by JAK tyrosine kinases, STATs enter the nucleus to regulate transcription of many different genes. Among the seven STATs (STAT1, STAT2, STAT3, STAT4, STAT5a, STAT5b, and STAT6), STAT1, STAT3, STAT5a, and STAT5b have a wide activation profile. STAT1 is activated by many different ligands including IFN family (IFN- α , IFN- β , IFN- γ and IL-10), gp130 family (IL-6, IL-11, LIF, CNTF, and G-CSF), and receptor tyrosine kinases (EGF, PDGF, and CSF-1).

Synonyms: CANDF7; IMD31A; IMD31B; IMD31C; ISGF-3; STAT91

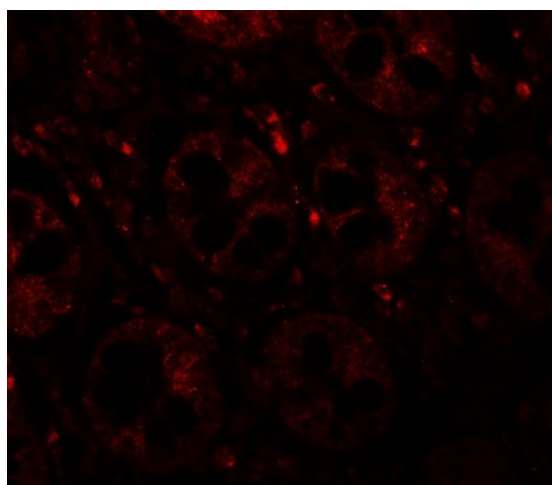
Protein Families: Druggable Genome, Transcription Factors

Protein Pathways: Chemokine signaling pathway, Jak-STAT signaling pathway, Pancreatic cancer, Pathways in cancer, Toll-like receptor signaling pathway

Product images:



Western blot analysis of STAT1 in human small intestine tissue lysate with STAT1 antibody at (A) 1 and (B) 2 ug/mL.



Immunofluorescence of STAT1 in human small intestine tissue with STAT1 antibody at 20 ug/mL.