

Product datasheet for **TA319708**

Spink2 Rabbit Polyclonal Antibody

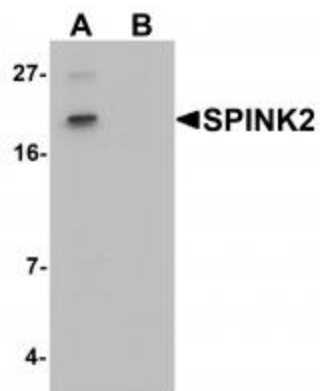
Product data:

Product Type:	Primary Antibodies
Applications:	IF, IHC, WB
Recommended Dilution:	WB: 1 ug/mL, ICC: 2.5 ug/mL, IF: 20 ug/mL
Reactivity:	Human, Mouse
Host:	Rabbit
Isotype:	IgG
Clonality:	Polyclonal
Immunogen:	SPINK2 antibody was raised against a 16 amino acid synthetic peptide near the carboxy terminus of human SPINK2.
Formulation:	SPINK2 Antibody is supplied in PBS containing 0.02% sodium azide.
Concentration:	1ug/ul
Purification:	SPINK2 Antibody is affinity chromatography purified via peptide column.
Conjugation:	Unconjugated
Storage:	Store at -20°C as received.
Stability:	Stable for 12 months from date of receipt.
Gene Name:	serine peptidase inhibitor, Kazal type 2
Database Link:	NP_001276693.1 Entrez Gene 69982 Mouse Q8BMY7
Background:	SPINK2 Antibody: Human serine proteinase inhibitor Kazal-type 2 (SPINK2) is required for maintaining normal spermatogenesis and potentially regulates serine protease-mediated apoptosis in male germ cells. It contains a typical kazal domain composed by six cysteine residues forming three disulfide bridges. SPINK2 functions as a trypsin/acrosin inhibitor and is synthesized mainly in the testis and seminal vesicle where its activity is engaged in fertility. SPINK2 plays a role in the pathogenesis of hereditary and chronic pancreatitis.
Synonyms:	HUSI-II

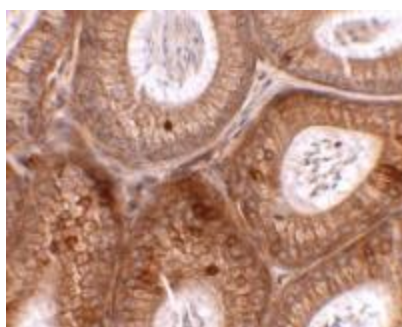


[View online »](#)

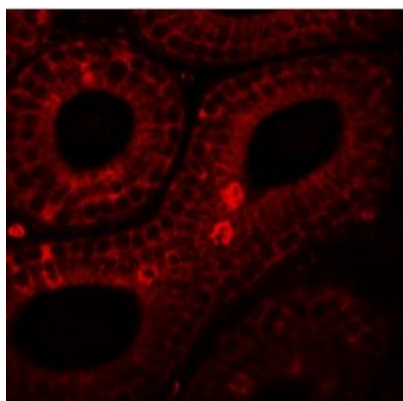
Product images:



Western blot analysis of SPINK2 in mouse heart tissue lysate with SPINK2 antibody at 1 ug/mL in (A) the absence and (B) the presence of blocking peptide.



Immunohistochemistry of SPINK2 in mouse testis tissue with SPINK2 antibody at 2.5 ug/mL.



Immunofluorescence of SPINK2 in mouse testis tissue with SPINK2 antibody at 20 ug/mL.