

Product datasheet for **TA319706**

SLAMF1 Rabbit Polyclonal Antibody

Product data:

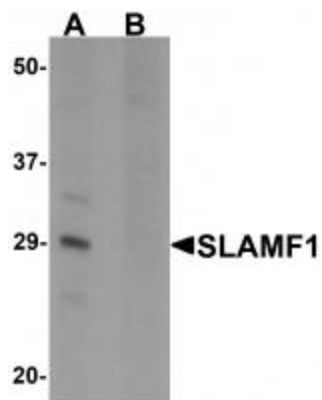
Product Type:	Primary Antibodies
Applications:	IF, IHC, WB
Recommended Dilution:	WB: 1 ug/mL, ICC: 5 ug/mL, IF: 20 ug/mL
Reactivity:	Human, Mouse, Rat
Host:	Rabbit
Isotype:	IgG
Clonality:	Polyclonal
Immunogen:	SLAMF1 antibody was raised against a 15 amino acid synthetic peptide near the amino terminus of human SLAMF1.
Formulation:	SLAMF1 Antibody is supplied in PBS containing 0.02% sodium azide.
Concentration:	1ug/ul
Purification:	SLAMF1 Antibody is affinity chromatography purified via peptide column.
Conjugation:	Unconjugated
Storage:	Antibody can be stored at 4°C up to one year. Antibodies should not be exposed to prolonged high temperatures.
Stability:	Stable for 12 months from date of receipt.
Gene Name:	signaling lymphocytic activation molecule family member 1
Database Link:	NP_003028 Entrez Gene 27218 MouseEntrez Gene 498286 RatEntrez Gene 6504 Human Q13291
Background:	SLAMF1 Antibody: The signaling lymphocyte-activation molecule family member 1 (SLAMF1) is a novel receptor on T cells that potentiates T cell expansion in a CD28-independent manner. SLAMF1 is predominantly expressed by hematopoietic tissues. Reports suggest that the extracellular domain of SLAMF1 is the receptor for the measles virus and acts as a co-activator on both T and B cells. It is thought to interact with SH2D1A and with PTPN11 via its cytoplasmic domain. Mutations of the SLAM associated gene may be associated with X-linked lympho-proliferative disease (XLP).
Synonyms:	CD150; CDw150; SLAM



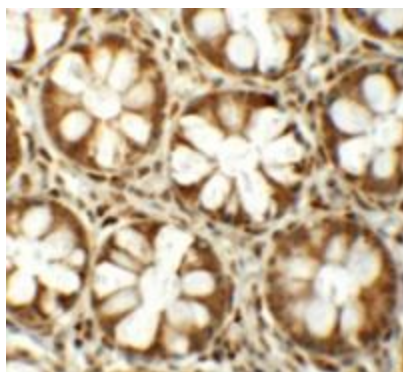
[View online »](#)

Protein Families: Druggable Genome, ES Cell Differentiation/IPS, Transmembrane

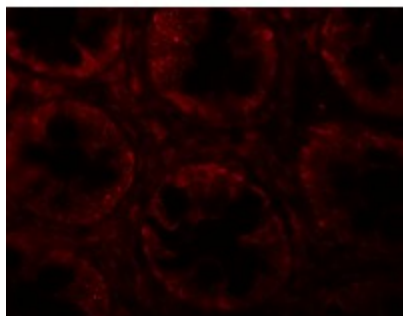
Product images:



Western blot analysis of SLAMF1 in rat colon tissue lysate with SLAMF1 antibody at 1 ug/mL in (A) the absence and (B) the presence of blocking peptide.



Immunohistochemistry of SLAMF1 in human colon tissue with SLAMF1 antibody at 5 ug/mL.



Immunofluorescence of SLAMF1 in human colon tissue with SLAMF1 antibody at 20 ug/mL.