

## Product datasheet for TA319705

### SIPA1 Rabbit Polyclonal Antibody

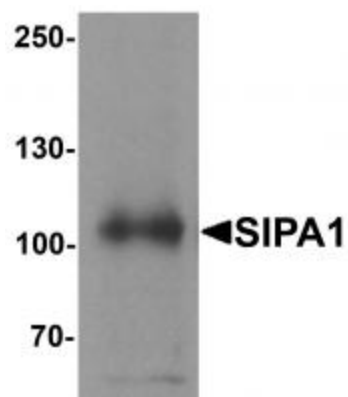
#### Product data:

|                       |   |
|-----------------------|---|
| Product Type:         | Primary Antibodies  |
| Applications:         | IF, WB  |
| Recommended Dilution: | WB: 1 ug/mL, IF: 20 ug/mL   |
| Reactivity:           | Human   |
| Host:                 | Rabbit  |
| Isotype:              | IgG   |
| Clonality:            | Polyclonal  |
| Immunogen:            | SIPA1 antibody was raised against a 19 amino acid synthetic peptide from near the amino terminus of human SIPA1.  |
| Formulation:          | SIPA1 Antibody is supplied in PBS containing 0.02% sodium azide.  |
| Concentration:        | 1ug/ul  |
| Purification:         | SIPA1 Antibody is affinity chromatography purified via peptide column.  |
| Conjugation:          | Unconjugated  |
| Storage:              | Store at -20°C as received.   |
| Stability:            | Stable for 12 months from date of receipt.  |
| Gene Name:            | signal-induced proliferation-associated 1   |
| Database Link:        | <a href="#">AAH10492</a><br><a href="#">Entrez Gene 6494 Human</a><br><a href="#">Q96FS4</a>  |
| Background:           | SIPA1 Antibody: Signal-induced proliferation 1 (SIPA1) is a member of the SIPA1 family of RapGAPs, a family of mitogen-induced GTPase activating proteins. SIPA1 exhibits a specific GAP activity for Ras-related regulatory proteins Rap1 and Rap2, but not for Ran or other small GTPases. When abnormally or prematurely expressed, SIPA1 may also hamper mitogen-induced cell cycle progression and may increase metastases in human cancers. |
| Synonyms:             | SPA1  |

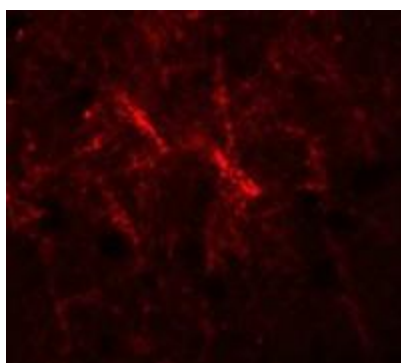


[View online »](#)

## Product images:



Western blot analysis of SIPA1 in human brain tissue lysate with SIPA1 antibody at 1 ug/mL.



Immunofluorescence of SIPA1 in human brain cells with SIPA1 antibody at 20 ug/mL.