

Product datasheet for **TA319704**

SGK1 Rabbit Polyclonal Antibody

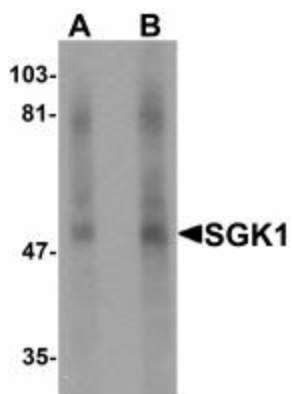
Product data:

Product Type:	Primary Antibodies
Applications:	IF, IHC, WB
Recommended Dilution:	WB: 1 - 2 ug/mL, ICC: 5 ug/mL, IF: 20 ug/mL
Reactivity:	Human, Mouse, Rat
Host:	Rabbit
Isotype:	IgG
Clonality:	Polyclonal
Immunogen:	SGK1 antibody was raised against an 18 amino acid synthetic peptide near the carboxy terminus of human SGK1.
Formulation:	SGK1 Antibody is supplied in PBS containing 0.02% sodium azide.
Concentration:	1 mg/ml
Purification:	SGK1 Antibody is affinity chromatography purified via peptide column.
Conjugation:	Unconjugated
Storage:	Store at -20°C as received.
Stability:	Stable for 12 months from date of receipt.
Gene Name:	serum/glucocorticoid regulated kinase 1
Database Link:	NP_005618 Entrez Gene 6446 Human O00141
Background:	SGK1 Antibody: Serum and glucocorticoid-regulated protein kinase 1 (SGK1) is a member of the AGC family of serine/threonine kinases that plays an important role in cellular stress response and cell survival. SGK1 is transcriptionally activated by numerous stimuli, including serum, glucocorticoids, osmotic stress, and hormones. SGK1 functions as a regulator of cell survival and ion channels and transporters such as ENaC or KCNA3/Kv1.3. It phosphorylates and negatively regulates pro-apoptotic FOXO3A. SGK1 is thought to play an essential function in nephropathy and cardiovascular development.
Synonyms:	SGK

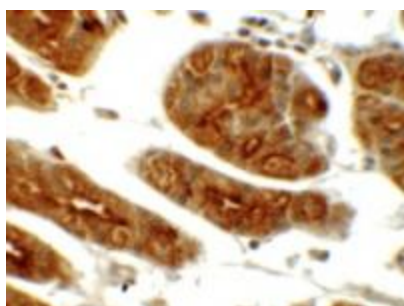


[View online »](#)

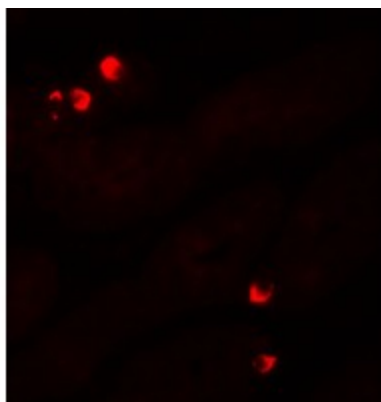
Product images:



Western blot analysis of SGK1 in human stomach tissue lysate with SGK1 antibody at (A) 1 and (B) 2 ug/mL.



Immunohistochemistry of SGK1 in human stomach tissue with SGK1 antibody at 5 ug/mL.



Immunofluorescence of SGK1 in human stomach tissue with SGK1 antibody at 20 ug/mL.