

## Product datasheet for **TA319703**

### TARC (CCL17) Rabbit Polyclonal Antibody

#### Product data:

Product Type:	Primary Antibodies
Applications:	IF, IHC, WB
Recommended Dilution:	WB: 1 - 2 ug/mL
Reactivity:	Human, Mouse, Rat
Host:	Rabbit
Isotype:	IgG
Clonality:	Polyclonal
Immunogen:	Rabbit polyclonal CCL17 antibody was raised against a 16 amino acid peptide near the carboxy terminus of human CCL17.
Formulation:	CCL17 Antibody is supplied in PBS containing 0.02% sodium azide.
Concentration:	1ug/ul
Purification:	CCL17 Antibody is affinity chromatography purified via peptide column.
Conjugation:	Unconjugated
Storage:	Store at -20°C as received.
Stability:	Stable for 12 months from date of receipt.
Predicted Protein Size:	10 kDa
Gene Name:	C-C motif chemokine ligand 17
Database Link:	<a href="#">NP_002978</a> <a href="#">Entrez Gene 20295 MouseEntrez Gene 117518 RatEntrez Gene 6361 Human Q92583</a>
Background:	CCL17 Antibody: CCL17, also known as TARC, binds to chemokine receptors CCR4 and CCR8 and plays important roles in T cell development in thymus as well as in trafficking and activation of mature T cells. CCL17 is secreted from monocyte-derived DCs and endothelial cells and is responsible for selective recruitment and migration of activated Th2 lymphocytes. CCL17 is also required for CCR7 and CXCR4-dependent migration of cutaneous dendritic cells under inflammatory conditions.
Synonyms:	A-152E5.3; ABCD-2; SCYA17; TARC

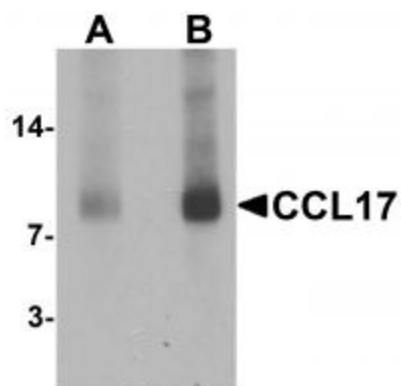


[View online »](#)

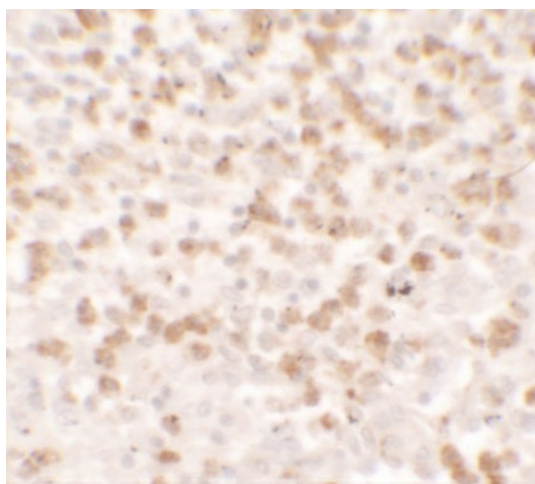
Protein Families: Druggable Genome, Secreted Protein

Protein Pathways: Chemokine signaling pathway, Cytokine-cytokine receptor interaction

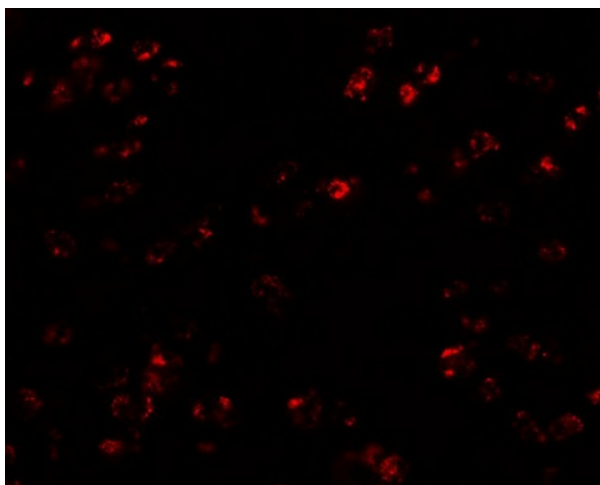
**Product images:**



Western blot analysis of CCL17 in rat spleen tissue lysate with CCL17 antibody at (A) 1 and (B) 2 ug/mL



Immunohistochemistry of CCL17 in spleen tissue with CCL17 antibody at 5 ug/mL.



Immunofluorescence of CCL17 in human spleen tissue with CCL17 antibody at 20 ug/mL.