

## Product datasheet for **TA319701**

### **MCP1 (CCL2) Rabbit Polyclonal Antibody**

#### **Product data:**

<b>Product Type:</b>	Primary Antibodies
<b>Applications:</b>	IF, IHC, WB
<b>Recommended Dilution:</b>	WB: 1 - 2 ug/mL
<b>Reactivity:</b>	Human, Mouse, Rat
<b>Host:</b>	Rabbit
<b>Isotype:</b>	IgG
<b>Clonality:</b>	Polyclonal
<b>Immunogen:</b>	Rabbit polyclonal CCL2 antibody was raised against a 17 amino acid peptide near the carboxy terminus of human CCL2.
<b>Formulation:</b>	CCL2 Antibody is supplied in PBS containing 0.02% sodium azide.
<b>Purification:</b>	CCL2 Antibody is affinity chromatography purified via peptide column.
<b>Conjugation:</b>	Unconjugated
<b>Storage:</b>	Store at -20°C as received.
<b>Stability:</b>	Stable for 12 months from date of receipt.
<b>Predicted Protein Size:</b>	11 kDa
<b>Gene Name:</b>	C-C motif chemokine ligand 2
<b>Database Link:</b>	<a href="#">NP_002973</a> <a href="#">Entrez Gene 20296 Mouse</a> <a href="#">Entrez Gene 24770 Rat</a> <a href="#">Entrez Gene 6347 Human</a> <a href="#">P13500</a>
<b>Background:</b>	CCL2 Antibody: CCL2, also known as monocyte chemotactic protein 1 (MCP1), belongs to the intercrine beta (chemokine CC) family. It is produced by a variety of cell types and is a potent chemoattractant for monocytes, memory T lymphocytes, and natural killer (NK) cells. It is upregulated during infection and inflammation. CCL2 is a potent basophil activator but does not affect eosinophils, whereas the related protein MCP2 stimulates both eosinophils and basophils. MCP3 has been shown to have the broadest range of influence. CCL2 has been implicated in the pathogenesis of diseases characterized by monocytic infiltrates, like psoriasis, rheumatoid arthritis or atherosclerosis.
<b>Synonyms:</b>	GDCF-2; HC11; HSMCR30; MCAF; MCP-1; MCP1; SCYA2; SMC-CF

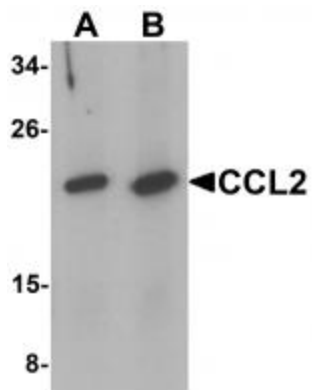


[View online »](#)

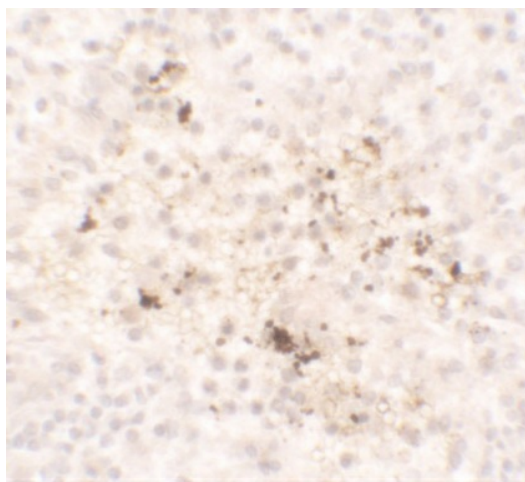
**Protein Families:** Druggable Genome, Secreted Protein

**Protein Pathways:** Chemokine signaling pathway, Cytokine-cytokine receptor interaction, NOD-like receptor signaling pathway

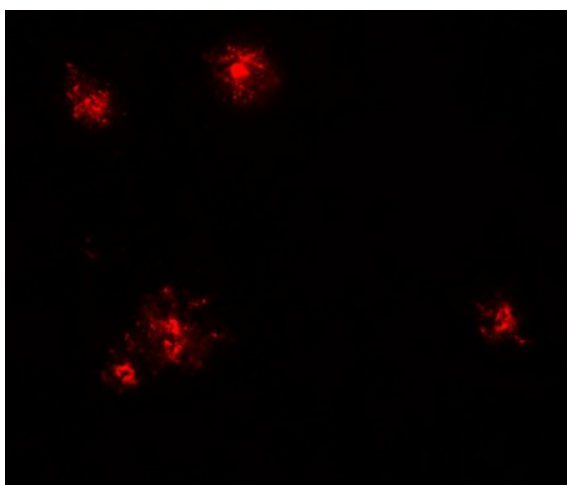
**Product images:**



Western blot analysis of CCL2 in rat spleen tissue lysate with CCL2 antibody at 1 ug/mL.



Immunohistochemistry of CCL2 in spleen tissue with CCL2 antibody at 5 ug/mL.



Immunofluorescence of CCL2 in human spleen tissue with CCL2 antibody at 20 ug/mL.