

## Product datasheet for **TA319700**

### ROCK1 Rabbit Polyclonal Antibody

#### Product data:

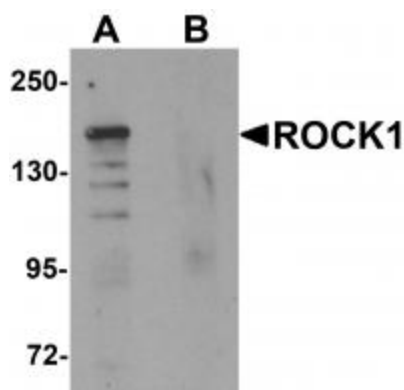
Product Type:	Primary Antibodies
Applications:	IF, WB
Recommended Dilution:	WB: 1 ug/mL, ICC: 10 ug/mL, IF: 20 ug/mL
Reactivity:	Human, Mouse, Rat
Host:	Rabbit
Isotype:	IgG
Clonality:	Polyclonal
Immunogen:	ROCK1 antibody was raised against a 15 amino acid synthetic peptide near the amino terminus of human ROCK1.
Formulation:	ROCK1 Antibody is supplied in PBS containing 0.02% sodium azide.
Concentration:	1ug/ul
Purification:	ROCK1 Antibody is affinity chromatography purified via peptide column.
Conjugation:	Unconjugated
Storage:	Store at -20°C as received.
Stability:	Stable for 12 months from date of receipt.
Gene Name:	Rho associated coiled-coil containing protein kinase 1
Database Link:	<a href="#">NP_005397</a> <a href="#">Entrez Gene 19877 Mouse</a> <a href="#">Entrez Gene 81762 Rat</a> <a href="#">Entrez Gene 6093 Human</a> <a href="#">Q13464</a>
Background:	ROCK1 Antibody: ROCK1 is a member of the AGC serine/threonine protein kinase family that regulates the assembly of the actin cytoskeleton. ROCK1 contains a protein kinase domain, a coiled-coil region and a zinc finger region and appears to be present as a dimer. ROCK1, like its isozyme ROCK2, is a downstream target of the small G-protein Rho and plays a role in smooth muscle contraction, malignant cell transformation, tumor invasion and metastasis, and mediates the cellular morphological changes during apoptosis.
Synonyms:	P160ROCK; ROCK-I
Protein Families:	Druggable Genome, Protein Kinase



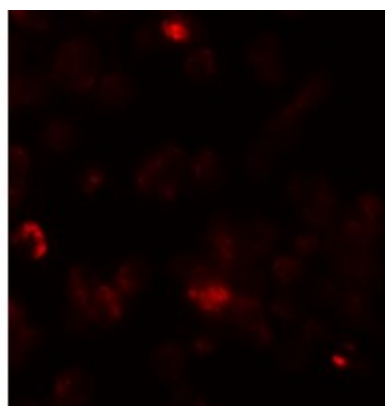
[View online »](#)

**Protein Pathways:**

Axon guidance, Chemokine signaling pathway, Focal adhesion, Leukocyte transendothelial migration, Pathogenic Escherichia coli infection, Regulation of actin cytoskeleton, TGF-beta signaling pathway, Vascular smooth muscle contraction, Wnt signaling pathway

**Product images:**

Western blot analysis of ROCK1 in 293 cell lysate with ROCK1 antibody at 1 ug/mL in (A) the absence and (B) the presence of blocking peptide.



Immunofluorescence of ROCK1 in 293 cells with ROCK1 antibody at 20 ug/mL.



Immunocytochemistry of ROCK1 in 293 cells with ROCK1 antibody at 10 ug/mL.