

Product datasheet for **TA319699**

DPF2 Rabbit Polyclonal Antibody

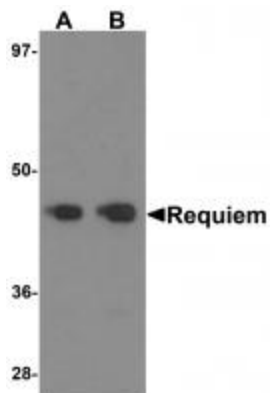
Product data:

Product Type:	Primary Antibodies
Applications:	IF, IHC, WB
Recommended Dilution:	WB: 1 ug/mL, ICC: 5 ug/mL, IF: 20 ug/mL
Reactivity:	Human, Mouse
Host:	Rabbit
Isotype:	IgG
Clonality:	Polyclonal
Immunogen:	REQUIEM antibody was raised against an 18 amino acid synthetic peptide near the carboxy terminus of human Requiem.
Formulation:	REQUIEM Antibody is supplied in PBS containing 0.02% sodium azide.
Concentration:	1ug/ul
Purification:	REQUIEM Antibody is affinity chromatography purified via peptide column.
Conjugation:	Unconjugated
Storage:	Store at -20°C as received.
Stability:	Stable for 12 months from date of receipt.
Gene Name:	double PHD fingers 2
Database Link:	AAB81203 Entrez Gene 5977 Human Q92785
Background:	REQUIEM Antibody: Requiem is a member of the d4 domain family, characterized by a zinc finger-like structural motif. This protein functions as a transcription factor which is necessary for the apoptotic response following deprivation of survival factors. It is expressed in numerous tissues in both cytosolic and nuclear regions and likely serves a regulatory role in rapid hematopoietic cell growth and turnover. Requiem has been found to act as an adaptor protein that links the NF-κB and SWI/SNF chromatin remodeling factor and is considered a candidate gene for multiple endocrine neoplasia type I, an inherited cancer syndrome involving multiple parathyroid, enteropancreatic, and pituitary tumors.
Synonyms:	REQ; ubi-d4; UBID4

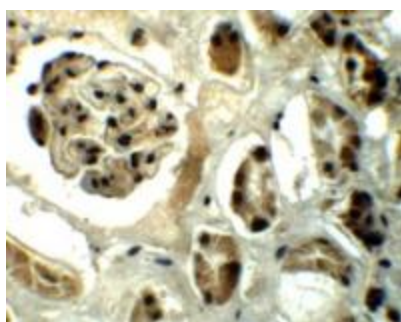


[View online »](#)

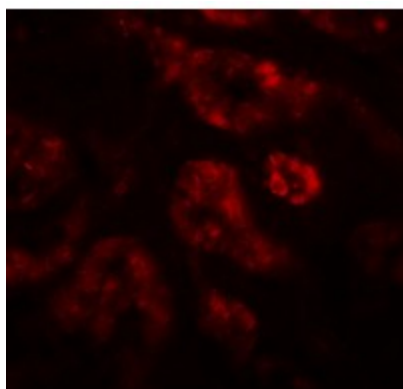
Product images:



Western blot analysis of Requiem in mouse kidney tissue lysate with Requiem antibody at 1 ug/mL.



Immunohistochemistry of REQUIEM in human kidney tissue with REQUIEM antibody at 5 ug/mL.



Immunofluorescence of REQUIEM in human kidney tissue with REQUIEM antibody at 20 ug/mL.