

## Product datasheet for **TA319698**

### CtIP (RBBP8) Rabbit Polyclonal Antibody

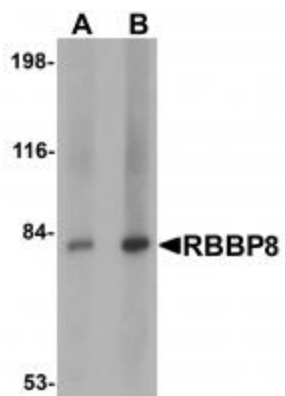
#### Product data:

Product Type:	Primary Antibodies
Applications:	IF, IHC, WB
Recommended Dilution:	WB: 1 - 2 ug/mL, ICC: 5 ug/mL, IF: 20 ug/mL
Reactivity:	Human, Mouse, Rat
Host:	Rabbit
Isotype:	IgG
Clonality:	Polyclonal
Immunogen:	RBBP8 antibody was raised against a 14 amino acid synthetic peptide near the center of human RBBP8.
Formulation:	RBBP8 Antibody is supplied in PBS containing 0.02% sodium azide.
Concentration:	1ug/ul
Purification:	RBBP8 Antibody is affinity chromatography purified via peptide column.
Conjugation:	Unconjugated
Storage:	Store at -20°C as received.
Stability:	Stable for 12 months from date of receipt.
Gene Name:	RB binding protein 8, endonuclease
Database Link:	<a href="#">NP_976037</a> <a href="#">Entrez Gene 5932 Human Q99708</a>
Background:	RBBP8 Antibody: RBBP8, also known as CtBP (carboxy-terminal binding protein) interacting protein (CTIP), was characterized for its role in transcription as a cofactor for the transcriptional repressor CtBP, and also as a binding partner for other proteins including the cell cycle regulators retinoblastoma protein (Rb) and breast cancer 1 (BRCA1). It is ubiquitously expressed and localizes to the nucleus. RBBP8 is thought to modulate the functions in cell proliferation, transcriptional regulation and DNA repair. RBBP8 also plays a central role in the cell cycle checkpoint response to DNA double-stranded breaks (DSBs), with new evidence demonstrating that it controls the choice of DSB repair pathway.
Synonyms:	COM1; CTIP; JWDS; RIM; SAE2; SCKL2

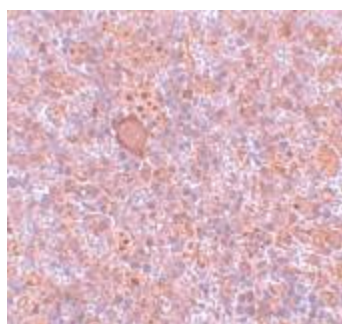


[View online »](#)

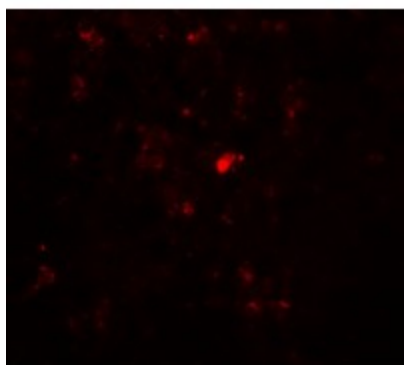
## Product images:



Western blot analysis of RBBP8 in mouse spleen tissue lysate with RBBP8 antibody at (A) 1 and (B) 2 ug/mL.



Immunohistochemistry of RBBP8 in rat spleen tissue with RBBP8 antibody at 5 ug/mL.



Immunofluorescence of RBBP8 in rat spleen tissue with RBBP8 antibody at 20 ug/mL.