

Product datasheet for **TA319697**

RAF1 Chicken Polyclonal Antibody

Product data:

Product Type:	Primary Antibodies
Applications:	WB
Recommended Dilution:	WB: 1 - 2 ug/mL
Reactivity:	Human, Mouse, Rat
Host:	Chicken
Isotype:	IgY
Clonality:	Polyclonal
Immunogen:	C-raf antibody was raised against an 19 amino acid synthetic peptide near the amino terminus of human C-raf.
Formulation:	C-raf Antibody is supplied in PBS containing 0.02% sodium azide.
Concentration:	1ug/ul
Purification:	C-raf Antibody is affinity chromatography purified via peptide column.
Conjugation:	Unconjugated
Storage:	Store at -20°C as received.
Stability:	Stable for 12 months from date of receipt.
Gene Name:	Raf-1 proto-oncogene, serine/threonine kinase
Database Link:	NP_002871 Entrez Gene 24703 Rat Entrez Gene 110157 Mouse Entrez Gene 5894 Human P04049
Background:	C-raf Antibody: C-raf is the cellular homolog of viral raf gene (v-raf) and encodes a MAP kinase kinase kinase (MAP3K), which functions downstream of the Ras family of membrane associated GTPases. Once activated, C-raf phosphorylates and activates the protein kinases MEK1 and MEK2, which in turn phosphorylate and activate the serine/threonine specific protein kinases, ERK1 and ERK2. These activated ERKs are pleiotropic effectors of cell physiology and play an important role in the control of gene expression involved in the cell division cycle, apoptosis, cell differentiation and cell migration. Mutations in this gene are associated with Noonan syndrome 5 and LEOPARD syndrome 2.
Synonyms:	c-Raf; CMD1NN; CRAF; NS5; Raf-1

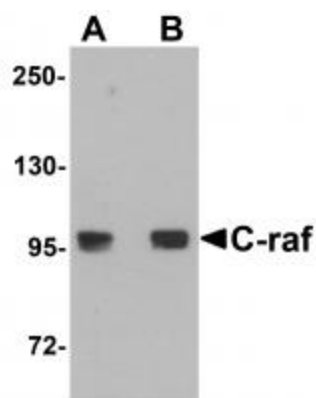


[View online »](#)

Protein Families: Druggable Genome, Protein Kinase

Protein Pathways: Acute myeloid leukemia, B cell receptor signaling pathway, Bladder cancer, Chemokine signaling pathway, Chronic myeloid leukemia, Colorectal cancer, Endometrial cancer, ErbB signaling pathway, Fc epsilon RI signaling pathway, Fc gamma R-mediated phagocytosis, Focal adhesion, Gap junction, Glioma, GnRH signaling pathway, Insulin signaling pathway, Long-term depression, Long-term potentiation, MAPK signaling pathway, Melanogenesis, Melanoma, Natural killer cell mediated cytotoxicity, Neurotrophin signaling pathway, Non-small cell lung cancer, Pancreatic cancer, Pathways in cancer, Progesterone-mediated oocyte maturation, Prostate cancer, Regulation of actin cytoskeleton, Renal cell carcinoma, T cell receptor signaling pathway, Vascular smooth muscle contraction, VEGF signaling pathway

Product images:



Western blot analysis of C-raf in 3T3 cell lysate with C-raf antibody at (A) 0.5 and (B) 1 ug/mL.