

Product datasheet for **TA319695**

PLAGL2 Rabbit Polyclonal Antibody

Product data:

| | |
|-------------------------|---|
| Product Type: | Primary Antibodies |
| Applications: | WB |
| Recommended Dilution: | WB: 1 - 2 ug/mL |
| Reactivity: | Human, Mouse, Rat |
| Host: | Rabbit |
| Isotype: | IgG |
| Clonality: | Polyclonal |
| Immunogen: | PLAGL2 antibody was raised against a 19 amino acid synthetic peptide near the amino terminus of human PLAGL2. |
| Formulation: | PLAGL2 Antibody is supplied in PBS containing 0.02% sodium azide. |
| Concentration: | 1ug/ul |
| Purification: | PLAGL2 Antibody is affinity chromatography purified via peptide column. |
| Conjugation: | Unconjugated |
| Storage: | Store at -20°C as received. |
| Stability: | Stable for 12 months from date of receipt. |
| Predicted Protein Size: | 55 kDa |
| Gene Name: | PLAG1 like zinc finger 2 |
| Database Link: | NP_002648 Entrez Gene 54711 MouseEntrez Gene 296281 RatEntrez Gene 5326 Human Q9UPG8 |



[View online »](#)

Background:

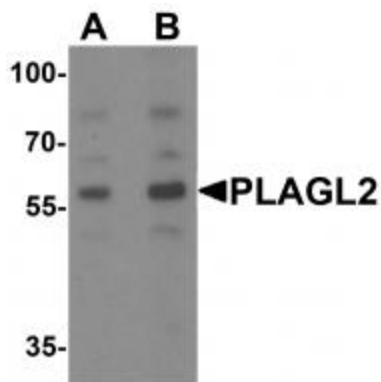
PLAGL2 Antibody: The PLAG (Pleiomorphic adenoma gene) family of zinc finger proteins include PLAG1, ZAC1 and PLAG-like 2 (PLAGL2). PLAG1 is the target gene for the pleiomorphic adenomas of the salivary gland. ZAC1 (PLAGL1) concomitantly controls apoptosis and cell cycle arrest through separate pathways. ZAC1 also acts as a transcriptional cofactor for nuclear receptors. PLAGL2 belongs to the krueppel C2H2-type zinc-finger protein family and contains 6 C2H2-type zinc fingers. It functions as a positive regulator of transcription and localizes to the nucleus. PLAGL2 is ubiquitously expressed with particular abundance in spleen, lung and testis, where it may be involved in cell cycle arrest and apoptosis of tumor cells.

Synonyms:

ZNF900

Protein Families:

Transcription Factors

Product images:

Western blot analysis of PLAGL2 in rat brain tissue lysate with PLAGL2 antibody at (A) 1 and (B) 2 ug/mL.