

Product datasheet for **TA319694**

PDGF beta (PDGFB) Rabbit Polyclonal Antibody

Product data:

Product Type:	Primary Antibodies
Applications:	IF, WB
Recommended Dilution:	WB: 1 - 2 ug/mL
Reactivity:	Human, Mouse, Rat
Host:	Rabbit
Isotype:	IgG
Clonality:	Polyclonal
Immunogen:	Rabbit polyclonal PDGF-B antibody was raised against a 19 amino acid peptide near the carboxy terminus of human PDGF-B.
Formulation:	PDGF-B Antibody is supplied in PBS containing 0.02% sodium azide.
Concentration:	1ug/ul
Purification:	PDGF-B Antibody is affinity chromatography purified via peptide column.
Conjugation:	Unconjugated
Storage:	Store at -20°C as received.
Stability:	Stable for 12 months from date of receipt.
Predicted Protein Size:	27 kDa
Gene Name:	platelet derived growth factor subunit B
Database Link:	NP_002599 Entrez Gene 18591 MouseEntrez Gene 24628 RatEntrez Gene 5155 Human P01127
Background:	PDGF-B Antibody: The platelet-derived growth factor beta (PDGF-B) is a member of the platelet-derived growth factor family. The four members of this family are mitogenic factors for cells of mesenchymal origin and are characterized by a motif of eight cysteines. This gene product can exist either as a homodimer (PDGF-BB) or as a heterodimer with the platelet-derived growth factor alpha polypeptide (PDGF-AB). Mutations in this gene are associated with meningioma, and reciprocal translocations between chromosomes 22 and 7, at sites where the PDGF-B gene and that for COL1A1 are located, are associated with a particular type of skin tumor called dermatofibrosarcoma protuberans.



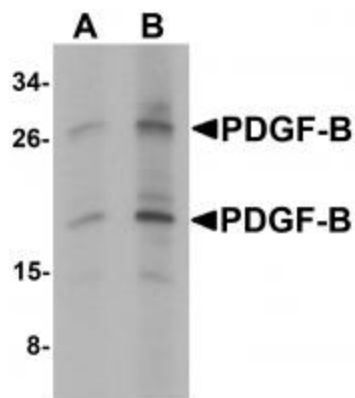
[View online »](#)

Synonyms: c-sis; IBGC5; PDGF-2; PDGF2; SIS; SSV

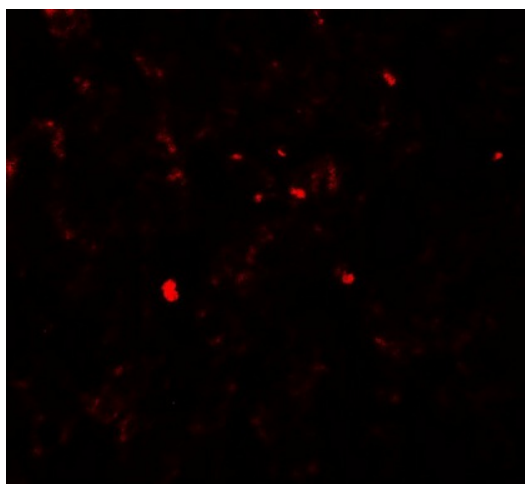
Protein Families: Druggable Genome

Protein Pathways: Cytokine-cytokine receptor interaction, Focal adhesion, Gap junction, Glioma, MAPK signaling pathway, Melanoma, Pathways in cancer, Prostate cancer, Regulation of actin cytoskeleton, Renal cell carcinoma

Product images:



Western blot analysis of PDGF-B in rat liver tissue lysate with PDGF-B antibody at (A) 1 and (B) 2 ug/mL.



Immunofluorescence of PDGF-B in human liver tissue with PDGF-B antibody at 20 ug/mL.