

## Product datasheet for **TA319690**

### Nephrin (NPHS1) Rabbit Polyclonal Antibody

#### Product data:

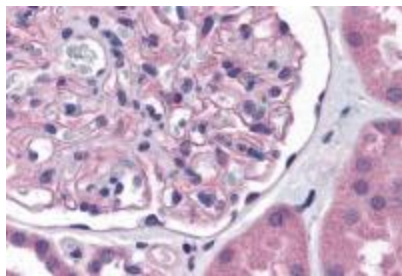
Product Type:	Primary Antibodies
Applications:	IHC
Recommended Dilution:	IHC: 5 ug/mL
Reactivity:	Human
Host:	Rabbit
Isotype:	IgG
Clonality:	Polyclonal
Immunogen:	Nephrin antibody was raised against a 16 amino acid synthetic peptide from near the center of human Nephrin.
Formulation:	Nephrin Antibody is supplied in PBS containing 0.02% sodium azide.
Concentration:	1ug/ul
Purification:	Nephrin Antibody is affinity chromatography purified via peptide column.
Conjugation:	Unconjugated
Storage:	Store at -20°C as received.
Stability:	Stable for 12 months from date of receipt.
Gene Name:	NPHS1 nephrin
Database Link:	<a href="#">NP_004637</a> <a href="#">Entrez Gene 4868 Human O60500</a>
Background:	Nephrin Antibody: Nephrin is strongly expressed in renal glomeruli and is a member of the immunoglobulin family of cell adhesion molecules. Mutations in the Nephrin gene result in congenital nephrotic syndrome, an autosomal-recessive disorder characterized by massive proteinuria in utero and nephrosis at birth. Renal glomeruli allow normal kidneys to filter plasma so that it is very pure. Nephrin is expressed in the podocyte slit-diaphragm of the renal glomeruli in a manner that suggests that Nephrin molecules homodimerize in an anti-parallel fashion similar to cadherin interactions in adherens junctions. Thus, Nephrin may constitute the entire extracellular structure of the slit-diaphragm.
Synonyms:	CNF; nephrin; NPHN



[View online »](#)

Protein Families: Druggable Genome, Transmembrane

**Product images:**



Immunohistochemistry of Nephrin in human kidney tissue with Nephrin antibody at 5 ug/mL.