

Product datasheet for **TA319689**

Nkx2.2 (NKX2-2) Rabbit Polyclonal Antibody

Product data:

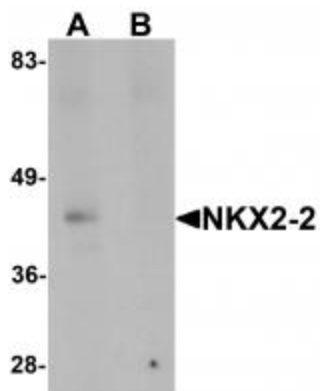
Product Type:	Primary Antibodies
Applications:	IF, IHC, WB
Recommended Dilution:	WB: 1 ug/mL, ICC: 2.5 ug/mL, IF: 20 ug/mL
Reactivity:	Human, Mouse, Rat
Host:	Rabbit
Isotype:	IgG
Clonality:	Polyclonal
Immunogen:	NKX2-2 antibody was raised against a 19 amino acid synthetic peptide near the center of human NKX2-2.
Formulation:	NKX2-2 Antibody is supplied in PBS containing 0.02% sodium azide.
Concentration:	1 mg/ml
Purification:	NKX2-2 Antibody is affinity chromatography purified via peptide column.
Conjugation:	Unconjugated
Storage:	Store at -20°C as received.
Stability:	Stable for 12 months from date of receipt.
Gene Name:	NK2 homeobox 2
Database Link:	NP_002500 Entrez Gene 18088 Mouse Entrez Gene 366214 Rat Entrez Gene 4821 Human O95096
Background:	NKX2-2 Antibody: NKX2-2 (NK2 homeobox 2) is a member of a family of transcription factors that are involved in embryonic development and cell fate. NKX2-2 is crucial in the development of pancreatic islet cell differentiation and activates the ghrelin-promoter in these cells. NKX2-2 is expressed at the onset of pancreatic epithelium formation and becomes restricted to mature α -, β - and PP cells, and in NKX2-2-null mice embryos, all β -cells and most α -cells are replaced by ghrelin-positive cells. NKX2-2 is also thought to be involved in ventral neuronal patterning and floor plate development and commissural axon guidance.
Synonyms:	NKX2.2; NKX2B
Protein Families:	Transcription Factors



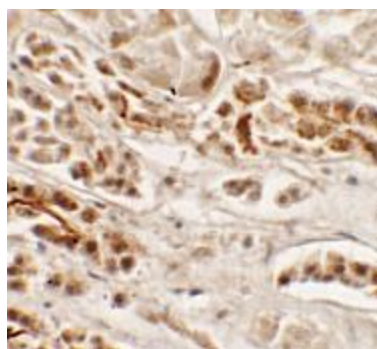
[View online »](#)

Protein Pathways: Maturity onset diabetes of the young

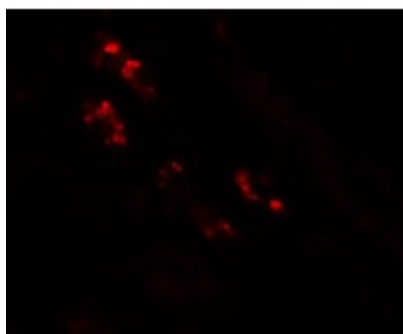
Product images:



Western blot analysis of NKX2-2 in rat kidney tissue lysate with NKX2-2 antibody at 1 ug/mL in (A) the absence and (B) the presence of blocking peptide.



Immunohistochemistry of NKX2-2 in human kidney tissue with NKX2-2 antibody at 2.5 ug/mL.



Immunofluorescence of NKX2-2 in human kidney tissue with NKX2-2 antibody at 20 ug/mL.