

Product datasheet for **TA319688**

NCBP1 Rabbit Polyclonal Antibody

Product data:

Product Type:	Primary Antibodies
Applications:	IF, WB
Recommended Dilution:	WB: 1 - 2 ug/mL
Reactivity:	Human, Mouse, Rat
Host:	Rabbit
Isotype:	IgG
Clonality:	Polyclonal
Immunogen:	NCBP1 antibody was raised against a 17 amino acid peptide near the center of human NCBP1.
Formulation:	NCBP1 Antibody is supplied in PBS containing 0.02% sodium azide.
Concentration:	1ug/ul
Purification:	NCBP1 Antibody is affinity chromatography purified via peptide column.
Conjugation:	Unconjugated
Storage:	Store at -20°C as received.
Stability:	Stable for 12 months from date of receipt.
Predicted Protein Size:	Predicted: 87 kDa; Observed: 87 kDa
Gene Name:	nuclear cap binding protein subunit 1
Database Link:	NP_002477 Entrez Gene 298075 RatEntrez Gene 433702 MouseEntrez Gene 4686 Human Q09161

Background: NCBP1 Antibody: NCBP1, also known as CBP80, is a component of the nuclear cap-binding protein complex (CBC), which binds to the monomethylated 5' cap of nascent pre-mRNA in the nucleoplasm. NCBP1 promotes high-affinity mRNA-cap binding and associates with the CTD of RNA polymerase II. The CBC promotes pre-mRNA splicing, 3'-end processing, RNA nuclear export, and nonsense-mediated mRNA decay (1,2). Recent evidence has shown that cellular-cap-binding proteins such as NCBP1 associate with influenza virus mRNAs, suggesting that these viral mRNAs may follow the normal cellular pathways for splicing, nuclear export, and translation (3).

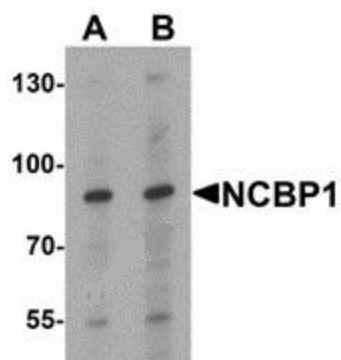


[View online »](#)

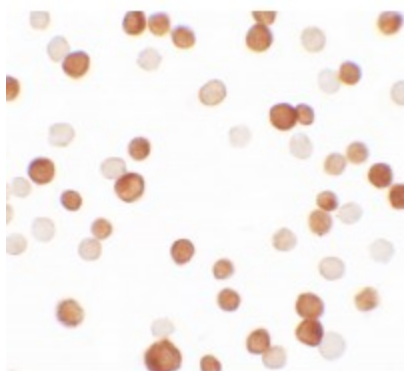
Synonyms: CBP80; NCBP; Sto1

Protein Pathways: Spliceosome

Product images:



Western blot analysis of NCBP1 in HeLa cell lysate with NCBP1 antibody at (A) 1 and (B) 2 ug/mL.



Immunocytochemistry of NCBP1 in HeLa cells with NCBP1 antibody at 2.5 ug/mL.