

Product datasheet for **TA319685**

MYBPC1 Rabbit Polyclonal Antibody

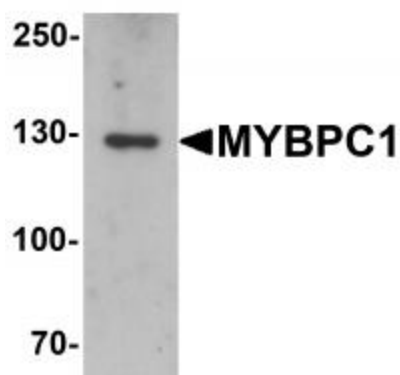
Product data:

Product Type:	Primary Antibodies
Applications:	IF, WB
Recommended Dilution:	WB: 1 ug/mL, IF: 20 ug/mL
Reactivity:	Human, Mouse, Rat
Host:	Rabbit
Isotype:	IgG
Clonality:	Polyclonal
Immunogen:	MYBPC1 antibody was raised against an 18 amino acid synthetic peptide near the amino terminus of human MYBPC1.
Formulation:	MYBPC1 Antibody is supplied in PBS containing 0.02% sodium azide.
Concentration:	1ug/ul
Purification:	MYBPC1 Antibody is affinity chromatography purified via peptide column.
Conjugation:	Unconjugated
Storage:	Store at -20°C as received.
Stability:	Stable for 12 months from date of receipt.
Gene Name:	myosin binding protein C, slow type
Database Link:	NP_002456 Entrez Gene 4604 Human Q00872
Background:	MYBPC1 Antibody: Myosin binding protein C (MYBPC) is a component of the thick filament of striated muscle, with the slow-type isoform designated MYBPC1. Both the fast-type (MYBPC2) and slow-type MYBPC protein contains seven immunoglobulin C2 motifs and three fibronectin type-III repeats. Multiple isoforms of MYBPC1 are known to exist, and are present in varying amounts in different skeletal muscles. It is thought that the MYBPC1 slow subfamily may play important roles in the assembly and stabilization of sarcomeric M- and A-bands and regulate the contractile properties of the actomyosin filaments.
Synonyms:	LCCS4; MYBPCC; MYBPCS

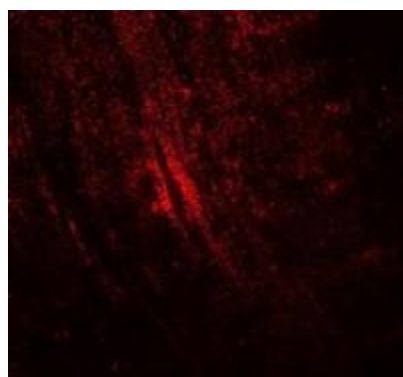


[View online »](#)

Product images:



Western blot analysis of MYBPC1 in rat skeletal muscle tissue lysate with MYBPC1 antibody at 1 ug/mL.



Immunofluorescence of MYBPC1 in mouse skeletal muscle cells with MYBPC1 antibody at 20 ug/mL.