

## Product datasheet for **TA319681**

### **MOX1 (MEOX1) Rabbit Polyclonal Antibody**

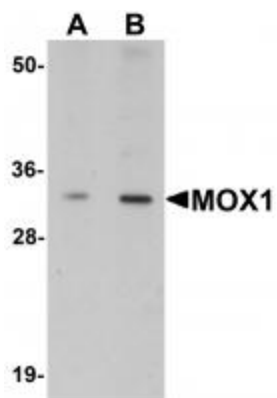
#### **Product data:**

|                              |   |
|------------------------------|---|
| <b>Product Type:</b>         | Primary Antibodies  |
| <b>Applications:</b>         | IF, IHC, WB   |
| <b>Recommended Dilution:</b> | WB: 1 - 2 ug/mL, ICC: 10 ug/mL, IF: 20 ug/mL  |
| <b>Reactivity:</b>           | Human, Mouse, Rat   |
| <b>Host:</b>                 | Rabbit  |
| <b>Isotype:</b>              | IgG   |
| <b>Clonality:</b>            | Polyclonal  |
| <b>Immunogen:</b>            | MOX1 antibody was raised against a 19 amino acid synthetic peptide near the center of human MOX1.   |
| <b>Formulation:</b>          | MOX1 Antibody is supplied in PBS containing 0.02% sodium azide.   |
| <b>Concentration:</b>        | 1ug/ul  |
| <b>Purification:</b>         | MOX1 Antibody is affinity chromatography purified via peptide column.   |
| <b>Conjugation:</b>          | Unconjugated  |
| <b>Storage:</b>              | Store at -20°C as received.   |
| <b>Stability:</b>            | Stable for 12 months from date of receipt.  |
| <b>Gene Name:</b>            | mesenchyme homeobox 1   |
| <b>Database Link:</b>        | <a href="#">NP_004518</a><br><a href="#">Entrez Gene 4222 Human P50221</a>  |
| <b>Background:</b>           | MOX1 Antibody: MOX1, also known as MEOX1, is a member of a subfamily of non-clustered, diverged, antennapedia-like homeobox-containing genes that is first expressed during gastrulation in the early mesoderm and later in presomitic mesoderm, early somites, dermomyotome and sclerotome. Both MOX1 and the related protein MOX2 are required for proper gene expression in all somitic compartments. MOX1 is an upstream regulator of the transcription factors Bapx1, Tbx18, and Uncx and is thus part of a regulatory circuit that functions in the maintenance of rostrocaudal sclerotome polarity and axial skeleton formation. |
| <b>Synonyms:</b>             | KFS2; MOX1  |



[View online »](#)

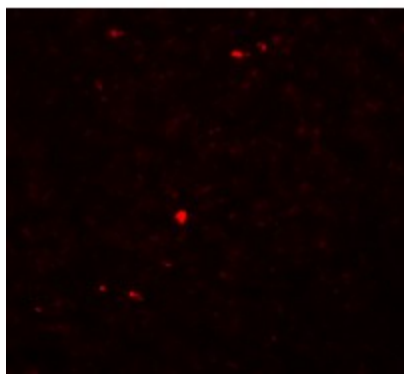
## Product images:



Western blot analysis of MOX1 in human liver tissue lysate with MOX1 antibody at (A) 1 and (B) 2 ug/mL.



Immunohistochemistry of MOX1 in rat liver tissue with MOX1 antibody at 10 ug/mL.



Immunofluorescence of MOX1 in rat liver tissue with MOX1 antibody at 20 ug/mL.