

Product datasheet for **TA319678**

Leucyl cystinyl aminopeptidase (LNPEP) Rabbit Polyclonal Antibody

Product data:

Product Type:	Primary Antibodies
Applications:	IF, WB
Recommended Dilution:	WB: 1 ug/mL, IF: 20 ug/mL
Reactivity:	Human
Host:	Rabbit
Isotype:	IgG
Clonality:	Polyclonal
Immunogen:	LNPEP antibody was raised against a 15 amino acid synthetic peptide near the carboxy terminus of human LNPEP.
Formulation:	LNPEP Antibody is supplied in PBS containing 0.02% sodium azide.
Concentration:	1ug/ul
Purification:	LNPEP Antibody is affinity chromatography purified via peptide column.
Conjugation:	Unconjugated
Storage:	Store at -20°C as received.
Stability:	Stable for 12 months from date of receipt.
Predicted Protein Size:	113 kDa
Gene Name:	leucyl/cystinyl aminopeptidase
Database Link:	NP_005566 Entrez Gene 4012 Human Q9UIQ6
Background:	LNPEP Antibody: LNPEP, also known as insulin-responsive aminopeptidase (IRAP), was initially identified as an abundant protein that is associated with specialized endosomes termed GLUT4 storage vesicles (GSVs) in adipocytes. The luminal domain of LNPEP contains an aminopeptidase activity that is involved in peptide hormone processing and antigenic peptide processing. LNPEP is also a key regulator of GLUT4 trafficking by controlling the sorting of GLUT4 from endosomes to the GSVs.
Synonyms:	CAP; IRAP; P-LAP; PLAP

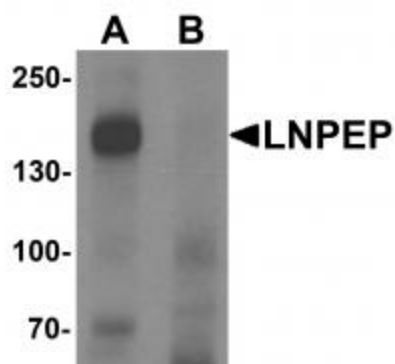


[View online »](#)

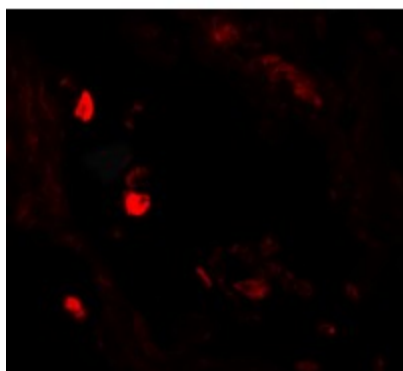
Protein Families: Druggable Genome, Protease, Secreted Protein, Transmembrane

Protein Pathways: Renin-angiotensin system

Product images:



Western blot analysis of LNPEP in human lung tissue lysate with LNPEP antibody at 1 ug/mL in (A) the absence and (B) the presence of blocking peptide.



Immunofluorescence of LNPEP in human lung tissue with LNPEP antibody at 20 ug/mL.