

Product datasheet for **TA319677**

LMX1B Rabbit Polyclonal Antibody

Product data:

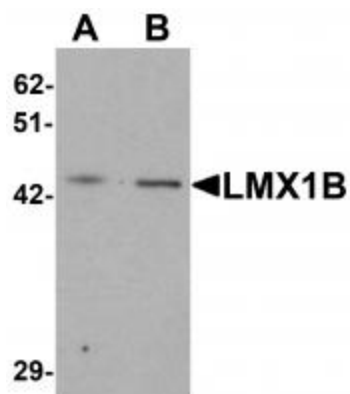
Product Type:	Primary Antibodies
Applications:	IF, IHC, WB
Recommended Dilution:	WB: 1 - 2 ug/mL, ICC: 5 ug/mL, IF: 20 ug/mL
Reactivity:	Human, Mouse, Rat
Host:	Rabbit
Isotype:	IgG
Clonality:	Polyclonal
Immunogen:	Rabbit polyclonal LMX1B antibody was raised against a 17 amino acid peptide near the carboxy terminus of human LMX1B.
Formulation:	LMX1B Antibody is supplied in PBS containing 0.02% sodium azide.
Concentration:	1ug/ul
Purification:	LMX1B Antibody is affinity chromatography purified via peptide column.
Conjugation:	Unconjugated
Storage:	Store at -20°C as received.
Stability:	Stable for 12 months from date of receipt.
Predicted Protein Size:	45 kDa
Gene Name:	LIM homeobox transcription factor 1 beta
Database Link:	NP_001167617 Entrez Gene 4010 Human O60663
Background:	LMX1B Antibody: The LIM homeobox transcription factor 1B (LMX1B) belongs to the LIM-homeodomain family. Members of this family are known to be important for pattern formation during development. LMX1B regulates mid-hindbrain patterning; LMX1B-null mice embryos have a severe reduction in the number of midbrain dopaminergic neurons compared to wild-type. While LMX1B appears to be important for both the development and the survival of dopamine neurons, the related LMX1A is crucial for the differentiation of these cells. However, LMX1A and LMX1B function cooperatively to regulated the proliferation, specification and differentiation of midbrain dopaminergic neuronal progenitors.



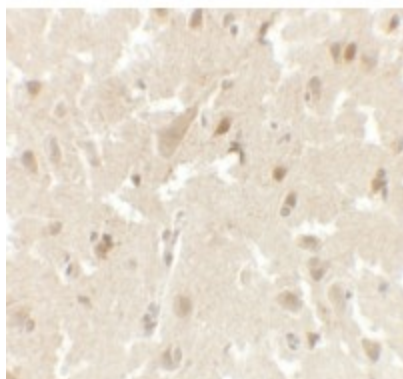
[View online »](#)

Synonyms: LMX1.2; NPS1

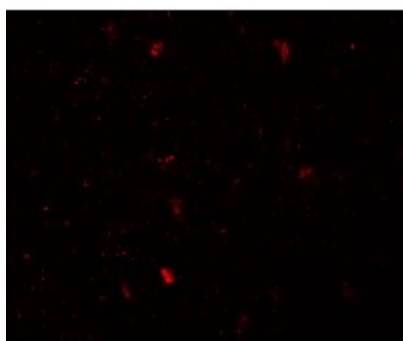
Product images:



Western blot analysis of LMX1B in A-20 cell lysate with LMX1B antibody at (A) 1 and (B) 2 ug/mL.



Immunohistochemistry of LMX1B in human brain tissue with LMX1B antibody at 5 ug/mL.



Immunofluorescence of LMX1B in human brain tissue with LMX1B antibody at 20 ug/mL.