

Product datasheet for **TA319676**

LMX1A Rabbit Polyclonal Antibody

Product data:

Product Type:	Primary Antibodies
Applications:	IF, IHC, WB
Recommended Dilution:	WB: 1 - 2 ug/mL, ICC: 2.5 ug/mL, IF: 20 ug/mL
Reactivity:	Human, Mouse, Rat
Host:	Rabbit
Isotype:	IgG
Clonality:	Polyclonal
Immunogen:	Rabbit polyclonal LMX1A antibody was raised against a 16 amino acid peptide near the carboxy terminus of human LMX1A.
Formulation:	LMX1A Antibody is supplied in PBS containing 0.02% sodium azide.
Concentration:	1ug/ul
Purification:	LMX1A Antibody is affinity chromatography purified via peptide column.
Conjugation:	Unconjugated
Storage:	Store at -20°C as received.
Stability:	Stable for 12 months from date of receipt.
Predicted Protein Size:	42 kDa
Gene Name:	LIM homeobox transcription factor 1 alpha
Database Link:	NP_796372 Entrez Gene 4009 Human Q8TE12



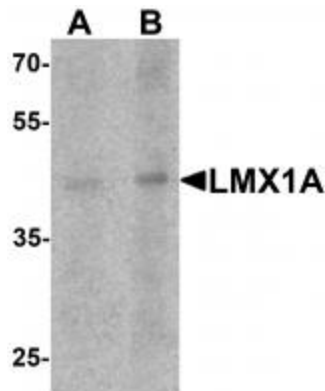
[View online »](#)

Background:

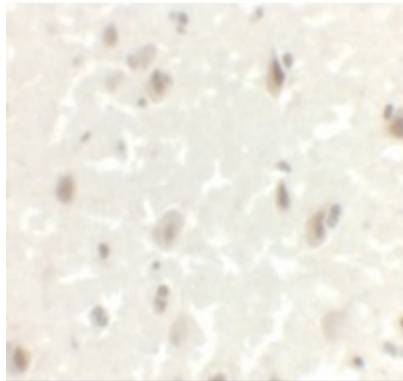
LMX1A Antibody: The LIM homeobox transcription factor 1 (LMX1A) belongs to the LIM-homeodomain family. Members of this family are known to be important for pattern formation during development. LMX1A binds an A/T-rich sequence and functions in the nucleus as a transcriptional activator to the insulin gene promoter. In the developing embryo, LMX1A is expressed along the neuraxis and leads to the development of the roof plate of the vertebrae. While LMX1A is crucial for the differentiation of dopamine neurons, the related LMX1B appears to be important for both the development and the survival of these cells. It has been suggested that LMX1A might be a useful biomarker or risk factor in tumor aggressiveness.

Synonyms:

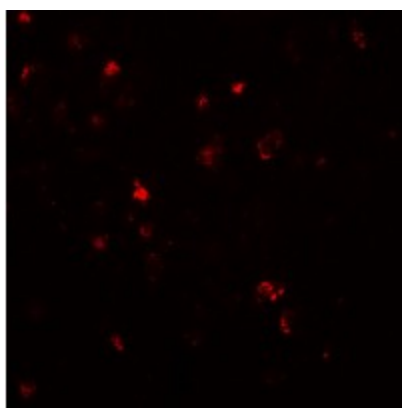
LMX1; LMX1.1

Product images:

Western blot analysis of LMX1A in rat brain tissue lysate with LMX1A antibody at (A) 1 and (B) 2 ug/mL.



Immunohistochemistry of LMX1A in human brain tissue with LMX1A antibody at 2.5 ug/mL.



Immunofluorescence of LMX1A in human brain tissue with LMX1A antibody at 20 ug/mL.