

Product datasheet for **TA319675**

LIF Rabbit Polyclonal Antibody

Product data:

Product Type:	Primary Antibodies
Applications:	IF, WB
Recommended Dilution:	WB: 1 - 2 ug/mL, IF: 20 ug/mL
Reactivity:	Human, Mouse, Rat
Host:	Rabbit
Isotype:	IgG
Clonality:	Polyclonal
Immunogen:	LIF antibody was raised against a 16 amino acid synthetic peptide near the center of human LIF.
Formulation:	LIF Antibody is supplied in PBS containing 0.02% sodium azide.
Concentration:	1ug/ul
Purification:	LIF Antibody is affinity chromatography purified via peptide column.
Conjugation:	Unconjugated
Storage:	Store at -20°C as received.
Stability:	Stable for 12 months from date of receipt.
Gene Name:	leukemia inhibitory factor
Database Link:	NP_002300 Entrez Gene 16878 Mouse Entrez Gene 60584 Rat Entrez Gene 3976 Human P15018

Background: LIF Antibody: LIF is a pleiotropic cytokine with roles in several different systems. It is involved in the induction of hematopoietic differentiation in normal and myeloid leukemia cells, induction of neuronal cell differentiation, regulator of mesenchymal to epithelial conversion during kidney development, and may also have a role in immune tolerance at the maternal-fetal interface. LIF was initially recognized by its ability to induce terminal differentiation of myeloid leukemic cells. It is a member of the IL-6 cytokine superfamily and can be highly glycosylated. LIF signaling is transduced through the LIF-R/gp130 receptor complex, leading to the phosphorylation and activation of the JAK/STAT pathway. Recent evidence shows that LIF inhibits cardiomyogenesis in embryonic stem cells via STAT3 activation.



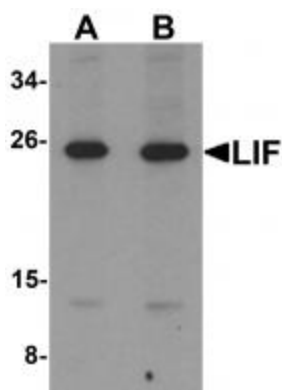
[View online »](#)

Synonyms: CDF; DIA; HILDA; MLPLI

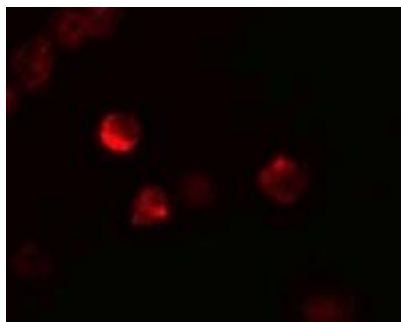
Protein Families: Adult stem cells, Druggable Genome, ES Cell Differentiation/IPS, Secreted Protein

Protein Pathways: Cytokine-cytokine receptor interaction, Jak-STAT signaling pathway

Product images:



Western blot analysis of LIF in 3T3 cell lysate with LIF antibody at (A) 1 and (B) 2 ug/mL.



Immunofluorescence of LIF in 3T3 cells with LIF antibody at 20 ug/mL.