

## Product datasheet for **TA319674**

### KPNA4 Rabbit Polyclonal Antibody

#### Product data:

Product Type:	Primary Antibodies
Applications:	IF, IHC, WB
Recommended Dilution:	WB: 1 ug/mL, IF: 20 ug/mL
Reactivity:	Human, Mouse, Rat
Host:	Rabbit
Isotype:	IgG
Clonality:	Polyclonal
Immunogen:	KPNA4 antibody was raised against a 15 amino acid synthetic peptide near the amino terminus of human KPNA4.
Formulation:	KPNA4 Antibody is supplied in PBS containing 0.02% sodium azide.
Concentration:	1ug/ul
Purification:	KPNA4 Antibody is affinity chromatography purified via peptide column.
Conjugation:	Unconjugated
Storage:	Store at -20°C as received.
Stability:	Stable for 12 months from date of receipt.
Gene Name:	karyopherin subunit alpha 4
Database Link:	<a href="#">NP_002259</a> <a href="#">Entrez Gene 16649 Mouse</a> <a href="#">Entrez Gene 361959 Rat</a> <a href="#">Entrez Gene 3840 Human</a> <a href="#">O00629</a>

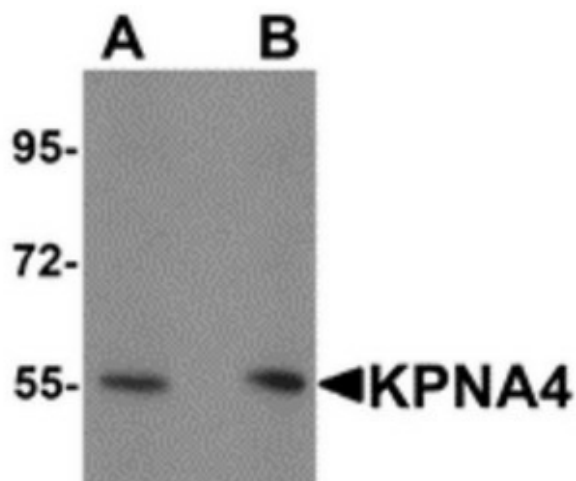
**Background:** KPNA4 Antibody: Karyopherin, a cytosolic and heterodimeric protein complex consisting of alpha and beta subunits, is responsible for targeting proteins with nuclear localization signals to the nuclear pore complex by an energy requiring, Ran-dependent mechanism. The alpha subunit and imported substrate enter the nucleus and accumulate in the nucleoplasm, while the beta subunit accumulates at the NPC. Molecules containing the classical nuclear localization signal (NLS) are transported into the nucleus by alpha/beta heterodimers. KPNA3 has been shown to be important in the TNF- $\alpha$ -induced nuclear import of NF- $\kappa$ B. It is also involved in the stress-mediated nuclear stabilization of p53 and the nuclear import and replication of HIV-1 in both dividing and non-dividing cells.



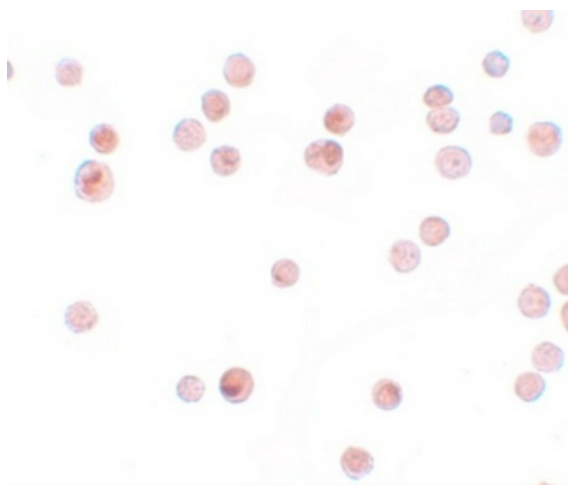
[View online »](#)

Synonyms: IPOA3; QIP1; SRP3

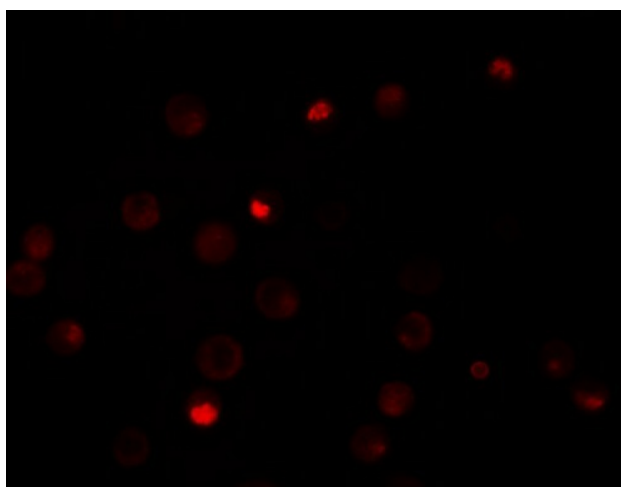
**Product images:**



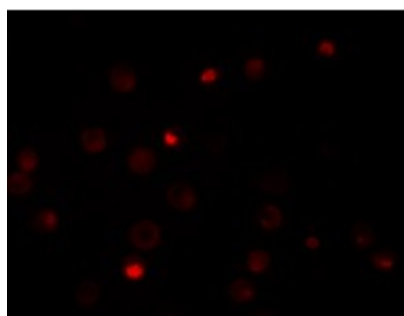
Western blot analysis of KPNA4 in HeLa cell lysate with KPNA4 antibody at 1ug/mL.



Immunocytochemistry of KPNA4 in HeLa cells with KPNA4 antibody at 2.5 ug/mL.



Immunofluorescence of KPNA4 in HeLa cells with KPNA4 antibody at 20 ug/mL.



Immunofluorescence of KPNA4 in HeLa cells with KPNA4 antibody at 20 ug/mL.