

Product datasheet for **TA319673**

KPNA3 Rabbit Polyclonal Antibody

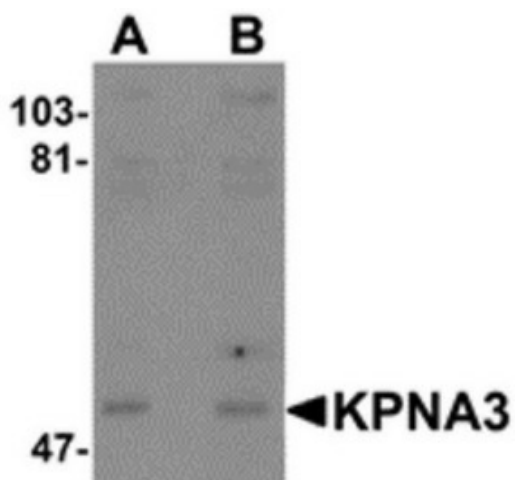
Product data:

Product Type:	Primary Antibodies
Applications:	IF, IHC, WB
Recommended Dilution:	WB: 1 - 2 ug/mL, ICC: 10 ug/mL, IF: 20 ug/mL
Reactivity:	Human, Mouse, Rat
Host:	Rabbit
Isotype:	IgG
Clonality:	Polyclonal
Immunogen:	KPNA3 antibody was raised against a 14 amino acid synthetic peptide near the carboxy end of human KPNA3.
Formulation:	KPNA3 Antibody is supplied in PBS containing 0.02% sodium azide.
Concentration:	1ug/ul
Purification:	KPNA3 Antibody is affinity chromatography purified via peptide column.
Conjugation:	Unconjugated
Storage:	Store at -20°C as received.
Stability:	Stable for 12 months from date of receipt.
Gene Name:	karyopherin subunit alpha 3
Database Link:	NP_002258 Entrez Gene 16648 Mouse Entrez Gene 361055 Rat Entrez Gene 3839 Human O00505
Background:	KPNA3 Antibody: Karyopherin, a cytosolic and heterodimeric protein complex consisting of alpha and beta subunits, is responsible for targeting proteins with nuclear localization signals to the nuclear pore complex by an energy requiring, Ran-dependent mechanism. The alpha subunit and imported substrate enter the nucleus and accumulate in the nucleoplasm, while the beta subunit accumulates at the NPC. KPNA3, the alpha subunit 3 of karyopherin, is similar to human KPNA2, suggesting that KPNA3 may be involved in the nuclear transport system. It is ubiquitously expressed and recent studies have shown that human KPNA3 may be associated with schizophrenia.
Synonyms:	hSRP1; IPOA4; SRP1; SRP1gamma; SRP4

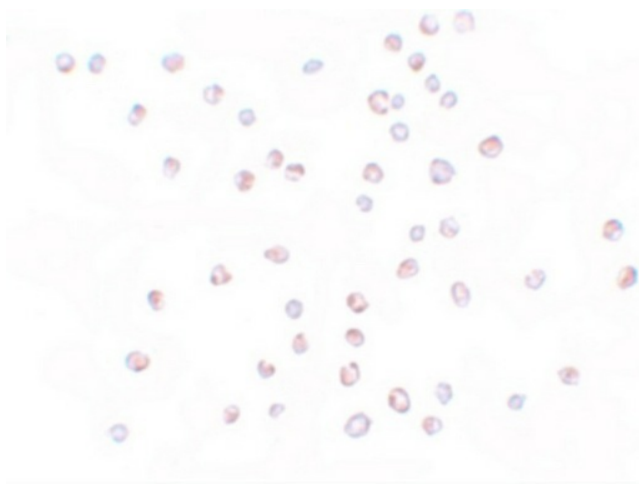


[View online »](#)

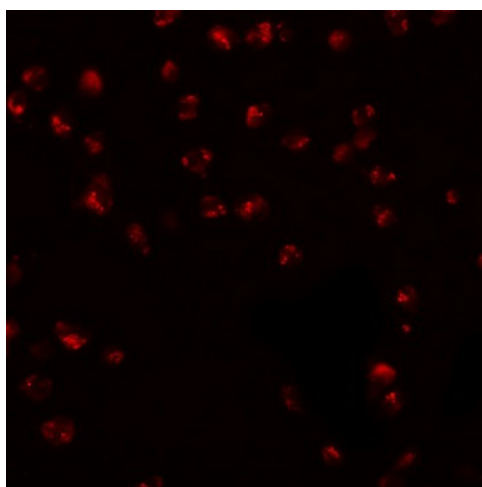
Product images:



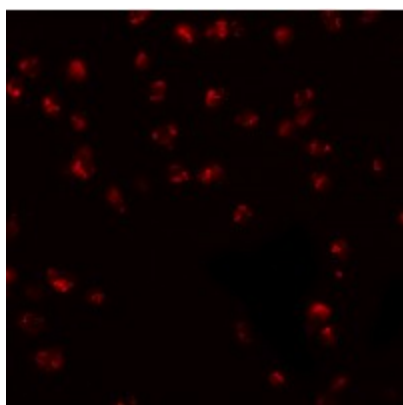
Western blot analysis of KPNA3 in EL4 cell lysate with KPNA3 antibody at (A) 1 and (B) 2 ug/mL.



Immunocytochemistry of KPNA3 in HeLa cells with KPNA3 antibody at 10 ug/mL.



Immunofluorescence of KPNA3 in EL4 cells with KPNA3 antibody at 20 ug/mL.



Immunofluorescence of KPNA3 in EL4 cells with KPNA3 antibody at 20 ug/mL.