

Product datasheet for **TA319672**

KPNA2 Rabbit Polyclonal Antibody

Product data:

Product Type:	Primary Antibodies
Applications:	IF, IHC, WB
Recommended Dilution:	WB: 1 - 2 ug/mL, ICC: 5 ug/mL, IF: 20 ug/mL
Reactivity:	Human, Mouse, Rat
Host:	Rabbit
Isotype:	IgG
Clonality:	Polyclonal
Immunogen:	KPNA2 antibody was raised against a 15 amino acid synthetic peptide near the amino terminus of human KPNA2. The immunogen is located within amino acids 40 - 90 of KPNA2.
Formulation:	KPNA2 Antibody is supplied in PBS containing 0.02% sodium azide.
Concentration:	1 mg/ml
Purification:	KPNA2 Antibody is affinity chromatography purified via peptide column.
Conjugation:	Unconjugated
Storage:	Store at -20°C as received.
Stability:	Stable for 12 months from date of receipt.
Gene Name:	karyopherin subunit alpha 2
Database Link:	NP_002257 Entrez Gene 16647 Mouse Entrez Gene 85245 Rat Entrez Gene 3838 Human P52292



[View online »](#)

Background:

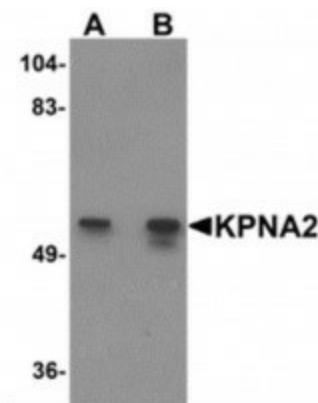
KPNA2 Antibody: Karyopherin, a cytosolic and heterodimeric protein complex consisting of alpha and beta subunits, is responsible for targeting proteins with nuclear localization signals to the nuclear pore complex by an energy requiring, Ran-dependent mechanism. The alpha subunit and imported substrate enter the nucleus and accumulate in the nucleoplasm, while the beta subunit accumulates at the NPC. KPNA2 is the alpha subunit 2 of karyopherin, which forms a complex with importin subunit beta-1 and functions as a cargo carrier that transports various complexes from cytoplasm into nucleus. It is ubiquitously expressed and contains an IBB/importin beta domain, ten Armadillo repeats that bind "cargo" and three intervening nuclear localization sequences (NLSs). It has recently been reported to play an important role in tumorigenesis and tumor progression.

Synonyms:

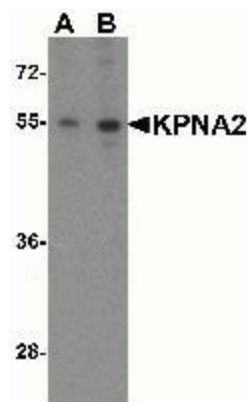
IPOA1; QIP2; RCH1; SRP1-alpha; SRP1alpha

Protein Families:

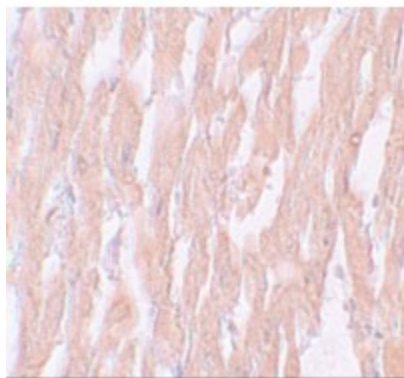
Druggable Genome, Stem cell - Pluripotency

Product images:

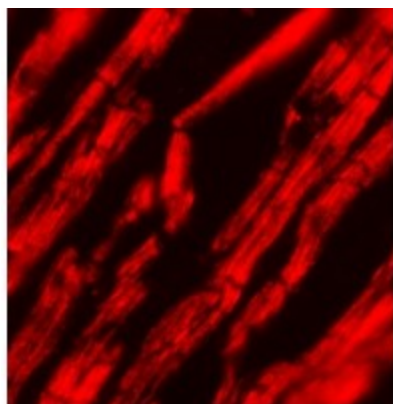
Western blot analysis of KPNA2 in rat heart tissue lysate with KPNA2 antibody at (A) 1 and (B) 2ug/ml.



Western blot analysis of KPNA2 expression in Daudi cell lysate with KPNA2 antibody at (A) 1 and (B) 2ug/ml.



Immunohistochemistry of KPNA2 in human heart tissue with KPNA2 antibody at 5ug/ml.



Immunofluorescence of KPNA2 in human heart tissue with KPNA2 antibody at 20ug/ml.